

# SIGHTS and SOUNDS

NOVEMBER 2025



COLLEGE OF FINE ARTS & COMMUNICATION  
**LAMAR UNIVERSITY**

— NEWSLETTER —

# *in this issue...*

**PAGES**  
3-4

## **Department of Art & Design**

Perfect Partnerships

**PAGE**  
5

## **Department of Communication & Media**

*Fall Filming*

**PAGE**  
6

## **Department of Deaf Studies & Deaf Education**

Future Cardinals Sign In!

**PAGE**  
7

## **Mary Morgan Moore Department of Music**

Holiday Melodies

**PAGES**  
8-9

## **Department of Speech & Hearing Sciences**

Presenting with Purpose

**PAGES**  
10-11

## **Department of Theatre & Dance**

Fall & Recovery

**PAGE**  
12

## **Dishman Art Museum**

Welcoming Alex Irvine

**PAGE**  
13

## **KVLU**

Relax & Unwind

**PAGE**  
14

## **Can't Miss This!**



**Hello!**

I am Golden Wright, privileged to serve as the Dean of the College of Fine Arts & Communication at Lamar University. Our college is a dynamic hub housing an array of talented individuals, including students, staff, and faculty. Through this monthly newsletter, we aim to shine a spotlight on the exceptional achievements of these individuals across various disciplines within the fine arts and communication fields.

Our college boasts an exceptional student body, each pursuing their passions in fields ranging from artistry to speech language pathology, interpretation, and performance. Student success will always be our core mission here in the College of Fine Arts & Communication. In this issue, we would like to take the opportunity to introduce some of our vibrant and talented students to you. These students represent an array of different areas and disciplines across our college.

At the heart of our college is the profound connectivity we foster among students, faculty, and staff through the common thread of communication. Each distinct area within our college relies on communication in its own unique way. Communication serves as the cornerstone of each departments' success within the college.

From the multifaceted realm of communication and media, utilizing mediums such as television, radio, social media, and newspapers to disseminate information, to the evocative storytelling of music majors who convey emotions and narratives through voice or instruments. From the invaluable contributions of speech and hearing sciences, enhancing our ability to communicate effectively, and improving our quality of life, to the empowering field of deaf studies, which enables individuals to serve as vital mediators in communication. The immersive experiences offered by theatre and dance provide an escape from reality through the interplay of movement and text. And lastly, the visual eloquence of art captures moments and places, transporting us to new dimensions and inspiring our imagination.

We hope this newsletter illuminates all of the possibilities that our College provides. We are immensely grateful for the unwavering support of our surrounding community, which generously provides funding for scholarships, new equipment, and invaluable learning opportunities. Thank you!

“THE BEST KEPT SECRET...”



**Golden Wright**  
College of Fine Arts & Communication, Dean



# Perfect Partnerships

**T**he Department of Art & Design has partnered with the Beaumont Art League for the Lamar Student Show, which will be on view until December 3rd.

The Beaumont Art League (BAL) was founded in 1943 by a group of local artists and has since become a vital part of the regional arts community. As a member-supported nonprofit organization, we are dedicated to promoting visual arts in Southeast Texas through a variety of programs, including monthly art exhibitions, juried competitions, workshops, classes, children's education, and studio sessions.

Current Lamar University art student, Seth Carl, is serving as the student intern for the Beaumont Art League and has been provided many opportunities during his time with them, including promotional work for the Lamar Student Show.

***"Helping organize the event was a lot of fun!" says Carl, "I enjoyed learning how to help promote the exhibition, collect work, and engage with the community. It connected the Beaumont Art League (BAL) with many students that we look forward to working with again!"***

Internships like these provide students with opportunities to work in galleries, assist with installations and collections, work in a marketing and promotional capacity and more. Carl believes that his work through the BAL has allowed him to meet with people from all walks of life and all creative mindsets.

Students from all disciplines were invited to participate in the Lamar Student Show. A variety of works are showcased, including 3D works, paintings, drawings and more. Carl was impressed by the variety of works and is excited to have the opportunity to showcase all that Lamar University students have to offer.

***"Regardless of a student's major or media, they have something to show, create, or improve upon,"*** explains Carl, ***"The variety alone strongly highlights the creativity of Lamar art students; it was incredible to see everyone's work together in one place, and I hope it encourages them to participate in future exhibitions."***

Winners of the exhibition were selected by Dario Bucheli. Bucheli is an artist and museum professional who is currently serving as an adjunct instructor in the Department of Art & Design. A first, second and third place were awarded with a small selection of honorable mentions.

The Department of Art & Design is thankful for their continued partnership with the Beaumont Art League and looks forward to future collaborations.

***"This partnership greatly benefits students and the community. For this community to grow, it's vital to show that there are spaces for educating and connecting artists and art lovers,"*** Carl reflects.

WINNERS AND HONORABLE MENTIONS ON PAGE 4

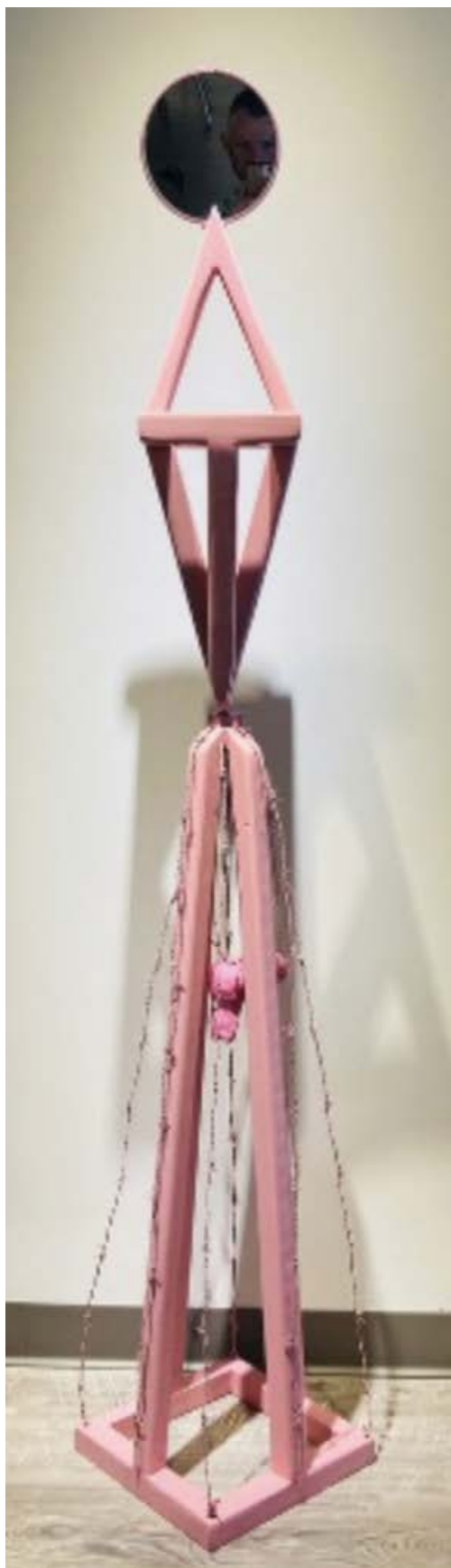


**First Place**

Lacie Grant

"Public Property"

Wood, Barb Wire, Paper Mache



**Second Place**

Olivia Cobb

"Self Portrait in Spain"

Oil Paint



**Honorable Mention**

Ashley DeLaCruz

"Aorta Aurora"

Mixed Media

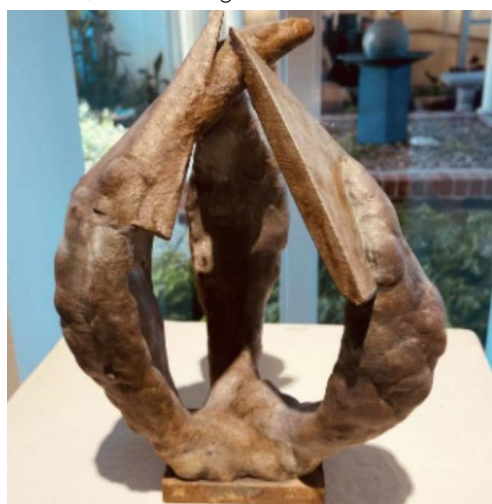


**Third Place**

Olivia Cobb

"Ambiguous Form I"

3D Print, Iron Coating Paint



**Honorable Mention**

Emily Hoang

"Searching in the Mirror"

Photography



**Honorable Mention**

Karolina Karsova

"After Man Ray"

Photography

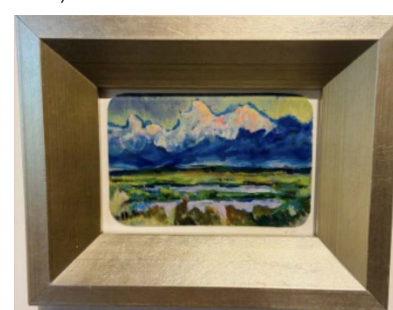


**Honorable Mention**

Rachel Durham

"Little Window"

Acrylic Paint





# Fall FILMING

This November, students from Lamar University's Department of Communication & Media are stepping behind the camera to begin filming the original short film, *NOLA*, a mystery thriller written by Heather Harmon and directed by Adan Baeza.

*NOLA* tells the haunting story of a woman who escapes her home only to find herself entangled with a murderous sisterhood.

*"I watched Sinners and thought to myself 'I wanna do something like that.' So I sat in the dark and listened to Boots by Ruyard Kipling and performed by Taylor Holmes and then the idea came,"* says writer, Heather Harmon.

Harmon, who aspires to be a professional screenwriter and director, focuses on the importance of collaboration throughout this process.

*"I am very protective of my vision as I believe most are, but I often try to remember that this is our film not just my film even though I wrote it,"* she explains, *"I feel it is important to remember great things are created through collaboration. I always try to listen to others' ideas."*

Director Adan Baeza is excited to begin filming on the project and has been looking to Netflix's *Adolescence* and Showtime's *Yellowjackets* for inspiration.

Baeza looks forward to the learning opportunities that come with filming.

*"Filming can be chaotic,"* Baeza explains, *"It is stressful. Things go wrong and break down, people get frustrated, and sometimes, you find out later that a shot is messed up and you need to redo it. However, it is also thrilling when you get a shot done exactly as it's supposed to go. It's fun to create art with friends who are as passionate as you about a project. It's an experience that is honestly hard to truly capture into words."*

Both students find these experiences invaluable to their preparation for their future careers. Baeza, also aspiring to enter the world of professional filmmaking, explains that projects like these enable him to have experience in managing a project. It can be a difficult process to stay true to the original writer's vision while still honoring your own ideas.

*"We often strive to find compromises whenever we have creative differences,"* says Baeza, *"This can range from having two takes of a scene with different camera angles to different actions for the actors to even trying to blend ideas together. However, we often try to find a middle ground first before moving onto trying two different ideas separately."*

When completed, the team plans to submit *NOLA* to film festivals and feature them on the group's YouTube channel.







# FUTURE CARDINALS SIGN IN!

**T**he Department of Deaf Studies & Deaf Education is excited to host 100 students from local high schools in the first week of November!

After faculty and doctoral students hosted a presentation on instruction and language competency strategies for American Sign Language (ASL) teachers in the summer of 2024, a call was sent throughout the state inviting K-12 ASL teachers to Lamar University's campus for a variety of workshops. These workshops covered topics like ASL storytelling, fingerspelling fluency strategies, and certification test strategies. Over 30 teachers attended these workshops, many of them alumni from Lamar University.

An invitation was then extended to those ASL teachers to bring their students to campus. This recruiting strategy helps the Department of Deaf Studies & Deaf Education with outreach and introduces students to their faculty, allowing for early networking opportunities.

*"We believe that students may want to attend Lamar's BA-ASL program if we can help nurture an early connection between their current academic learning and their future endeavors,"* explains Dr. Zanthia Smith, Interim Chair of the Department of Deaf Studies & Deaf Education.

The students and their educational entourage will arrive on November 5, 2025, for a day at Lamar. Department faculty, staff and students will meet with them in the University Theatre from 10:20 AM to 12:00 PM. During this session, they will promote the BA-ASL degree program, introduce the faculty and student organizations, and conduct activities which will allow them to interact with current Lamar University ASL students and instructors.

*"We hope these tours will be an annual recruitment activity for the BA-ASL program,"* says Dr. Smith, *"Many of the ASL teachers across the state are graduates of Lamar University. We remain the only four-year ASL program in the state of Texas. It's wonderful to have the opportunity to invite them back on campus and inspire the next generation of ASL teachers."*

Though efforts such as the teacher workshops and the high school student recruitment events catered specifically toward ASL majors, the Department of Deaf Studies & Deaf Education looks forward to reconnecting with alumni and to increasing their undergraduate student population.



COLLEGE OF FINE ARTS & COMMUNICATION

**LAMAR UNIVERSITY**

Mary Morgan Moore Department of Music



# Holiday Melodies

**T**his December, the Lamar University choirs and Wind Ensemble are excited to debut a new, annual Holiday Concert.

The groups will be performing the beloved melodies of *The Many Moods of Christmas* by legendary American Conductors, Robert Shaw and Russell Bennett.

After years of performing *Messiah*, this year's concert marks a fresh chapter.

Dr. James Han, Professor and Director of Choral Activities states, *"As an educator, I always think about our students' growth. Repeating the same repertoire every year limits their experience. I wanted to give them, and our audience, something new."*

*The Many Moods of Christmas* features songs audiences know and love, including "Silent Night", "Joy to the World", and "What Child is This?" All four suites of music will be performed by the choir alongside the Wind Ensemble; marking the first full collaborative performance between the university's choral and instrumental programs.

*"This is the first time we've combined both areas for a full-length performance,"* Dr. Han says,

*"It's exciting for both our students and the community."*

In addition to a new repertoire, the concert will also take place in a new venue: The Wesley Methodist Church.

The church offers ample space for both the 60-member choir and full orchestra, as well as convenient parking. *"It's a beautiful space and a wonderful fit for this kind of performance,"* Dr. Han remarks.

The Wesley Methodist Sanctuary Choir will also join the Lamar groups to perform the concert finale.

*"It will be a wonderful musical gathering to celebrate the holiday!"* says Dr. Han.

The Holiday Concert will take place on Friday, December 5th at 7:30 P.M. at Wesley Methodist Church, 3810 N. Major Drive, Beaumont, Texas. The event is free and open to the public. Guests are encouraged to arrive at least 30 minutes early for the best seating.





*Envisioning Possibilities for the*

**2025 ASHA CONVENTION**

**FUTURE**

# PRESENTING WITH *PURPOSE*

**T**he Department of Speech & Hearing Sciences is excited to highlight multiple presenters at this year's ASHA (American Speech-Language Hearing Association) Convention in Washington D.C.

The annual ASHA Convention is the premier professional development and networking event for speech-language pathologists; audiologists; speech, language, and hearing scientists; assistants; and students. It offers a robust in-person education program with supplemental virtual content, including presentations from Lamar's own, Dr. Johanna Boulton, Mrs. Chelsea Lyles and undergraduate student and Beck Scholar, Harvest Prater, who are all thrilled to present their research.

Chelsea Lyles, SLP Clinic Director in the SPSH department at Lamar University, will present a poster at the 2025 ASHA Convention on how significant others perceive changes in friendship after their loved one is diagnosed with aphasia. The project, part of a larger study exploring friendship after aphasia, emphasizes the essential role significant others play in supporting social participation and emotional well-being. Lyles hopes attendees will gain practical, person-centered strategies for addressing friendship and connection in therapy.

She describes preparing for ASHA as an inspiring introduction to the rigor of qualitative research and a transformative learning experience that continues to shape her as both a clinician and researcher.

*"For me, it's been realizing just how rigorous qualitative research truly is. I had learned about the process in my Ph.D. coursework, but engaging in it firsthand has been eye-opening and inspiring. I want to do it all the time now! Getting to amplify the lived experiences of clients and their families in a way that meaningfully informs clinical care has been incredibly powerful,"* says Lyles.

Dr. Boulton's presentation, Grow Your Own: Promoting CSD Careers to High School Students, focuses on recruitment methods.

*"Last year, I stumbled upon an article that a school-based speech-language pathologist, Ms. Lynne Stevens, wrote in the ASHA Leader, the newsletter of the American Speech-Language-Hearing Association,"* Dr. Boulton explains, *"The article highlighted the success she was*

CONTINUED ON PAGE 9

*having in promoting the professions of Speech-Language Pathology and Audiology to high schoolers in her local school district in Maryland. I was so impressed by her article that I shot her a congratulatory email and that was the beginning of a friendship and collaborative relationship. She shared some materials and pointers with me, and I hit the ground running, using her materials to submit a research proposal to collect data on the effectiveness of her recruitment methods."*

Dr. Boulton hopes that her presentation leaves attendees with practical tips and tricks to engage with their community and spread the word about the world of Speech-Language Pathology and Audiology.

*"It can be intimidating to take the leap, but it helps to have successful models to follow,"* says Dr. Boulton.

Harvest Prater, an undergraduate student in the Department of Speech & Hearing Sciences, McNair Scholar and Beck Scholar, has prepared a presentation inspired by her previous research in the McNair program.

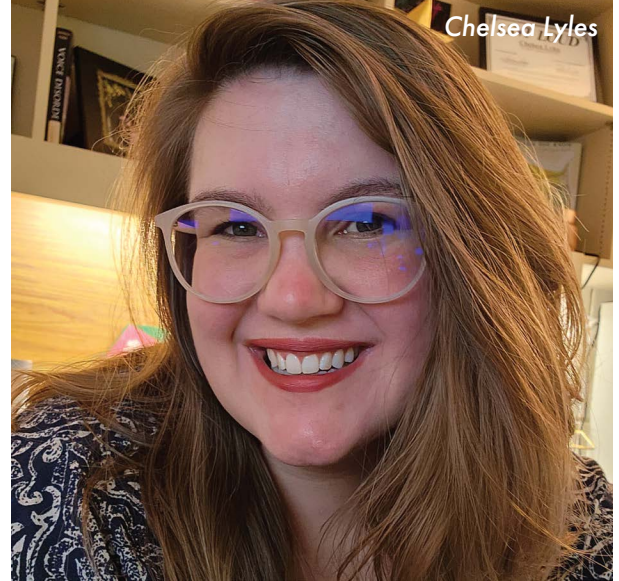
*"After completing my research under the McNair Scholars Program, I became more interested in the curriculum and foundational concepts within rehabilitative science disciplines. That experience pushed me to think more critically about how different allied health professions work together. My research for ASHA allowed me to deepen my understanding of the interprofessional world, especially how collaboration across disciplines shapes care, communication, and clinical outcomes,"* Prater explains.

Prater looks forward to presenting this research to fellow students, professionals and academics in the field at the ASHA Convention and hopes that projects like these continue to set her on the right path for her future career.

*"The most valuable aspect of preparing for ASHA is the realization of how far I've come as a pre-professional student within my field,"* says Prater, *"There are times I doubt my abilities and question what type of speech-language pathologist I will become, but moments in my academic career like ASHA help me feel inspired and assured that I am on the right path."*

Dr. Boulton has served as one of Prater's mentors over the course of her undergraduate studies and is thrilled that she will have the opportunity to take the stage at the ASHA Convention.

*"ASHA presentations are prestigious even for licensed, certified professionals, but I am no longer surprised by the heights to which Harvest soars. Her ASHA presentation is yet another example of the consistently excellent work she does. I am beyond proud of her and cannot wait to see what she accomplishes next,"* praises Dr. Boulton.



Chelsea Lyles



Dr. Johanna Boulton



Harvest Prater



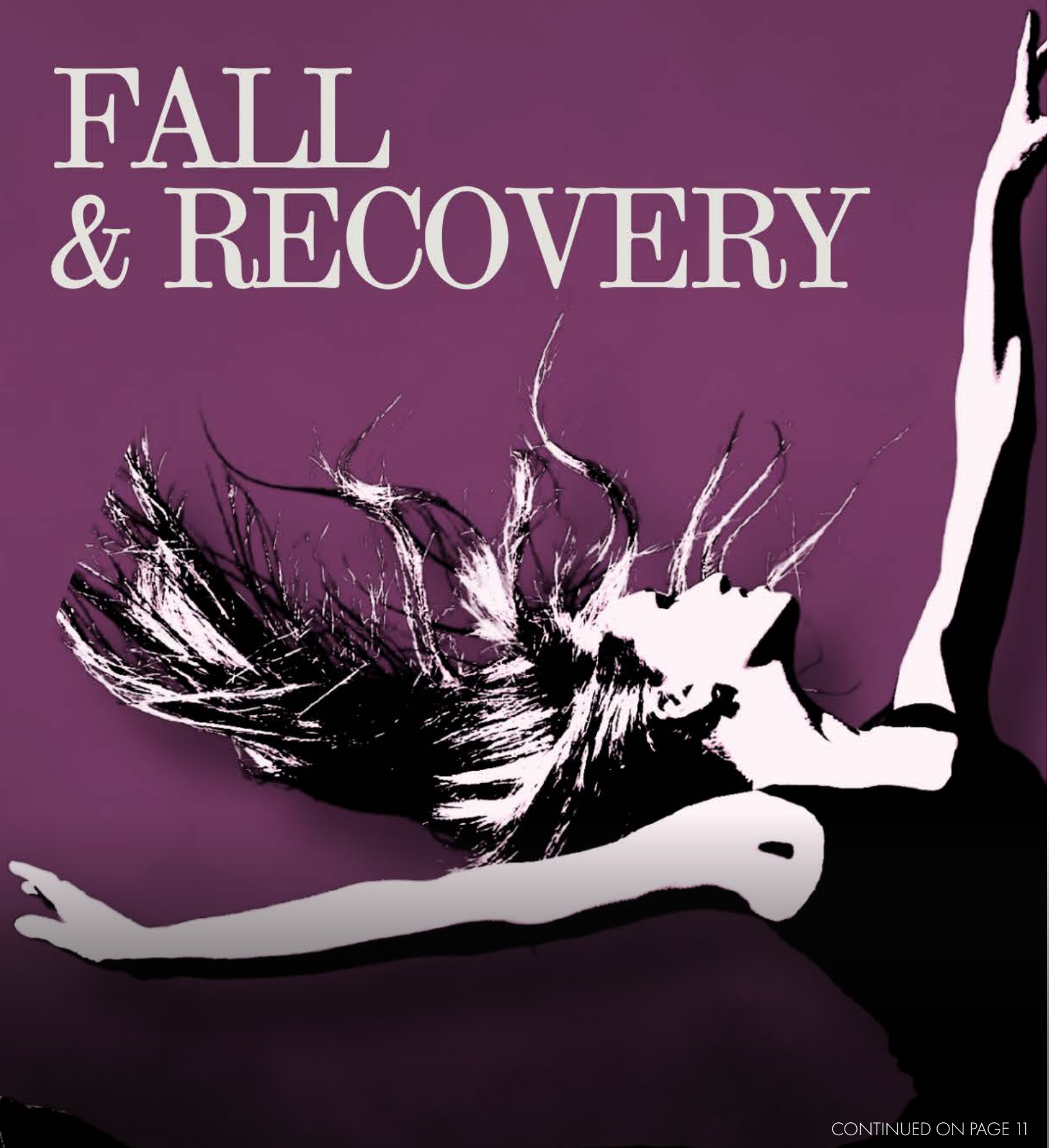


COLLEGE OF FINE ARTS & COMMUNICATION

**LAMAR UNIVERSITY**

Department of Theatre & Dance

# FALL & RECOVERY



CONTINUED ON PAGE 11



**T**he Department of Theatre & Dance is excited to present its annual autumnal dance concert, Fall and Recovery.

This year, Fall and Recovery will be held in the Studio Theatre instead of the University Theatre. A change that allows for new experiences for our faculty, staff, students and audience members.

*"The change of venue has given us a chance to make dances that feel more intimate and gives our students the opportunity to experience a very different performance quality,"* says Amy Wright, Assistant Professor of Dance, *"When you know you are making contemporary dances for a more intimate space, you can approach storytelling with a different kind of nuance. As a performer, when you are so close to the audience, you almost feel that you are in partnership with them- it enhances the feeling that in each dance you are going on a journey together, and it requires you to commit and to focus in what, for some of our dancers, may be an entirely new way. There's a kind of shared energy that is created by this kind of performance that I'm looking forward to seeing our students experience."*

This semester's guest artist, Bill Wade, is excited to return to Lamar University. He previously served as an adjudicator when the Department of Theatre & Dance hosted the American College Dance Association South Central Region Festival.

Wade founded his company, Inlet Dance Theatre, in 2001. Inlet Dance Theatre is one of Cleveland, Ohio's most

exciting professional contemporary dance companies with roots in American Modern Dance. Inlet embodies Wade's longstanding belief that dance viewing, training, and performing experiences may serve as tools to bring about personal growth and development. During their 24-year history, they have transformed from a small dance company with local impact into a celebrated organization that impacts people on an international level.

Wade's work focuses on the use of dynamic visual design and non-traditional partnering in storytelling and is excited to explore these techniques with Lamar University dance students.

*"The students loved their week with Bill!,"* explains Amy Wright, *"Guest Artist week is always both busy and inspiring for our students because it provides big challenges and opportunities to reinforce what they are learning in their classes through new perspectives that they may not have considered before. During the week, they spend 3 hours every day in the studio creating a new work, and because the guest residency also includes master classes, technique classes, and an audition, it is a great taste of the professional world for our dancers. They always finish residency week feeling exhausted but also proud of what they have accomplished."*

Wright is always impressed by the tenacity of our students and always encourages them to take leaps and chances.

*"The cast of this concert is small but mighty- and they are tackling some big, challenging dancing this semester. It's incredibly satisfying to work with students who are so eager, and to me one of the things that defines ours is that they are willing to try anything that you throw at them in the classroom and on the stage,"* Wright explains, *"This is one of the biggest compliments that our guests artists always remark on- our students know how to say yes!"*

Highlighting a variety of genres, styles and techniques, Fall and Recovery is guaranteed to have something for everyone. We hope you can join us for these dynamic performances!

Fall and Recovery will take the stage on November 20th, 21st and November 22nd at 7:30 p.m. There will also be a matinee performance on November 22nd at 2:00 p.m. All performances will be held in the Studio Theatre between the Dishman Art Museum and the Jimmy Simmons Music building on the campus of Lamar University.

Tickets are available through [lamar.edu/lutdtix](http://lamar.edu/lutdtix).



# Welcoming ALEX IRVINE



The Dishman Art Museum is excited to announce their new Museum Director, Alex Irvine.

Irvine received her Bachelor of Arts in Art History from the University of Houston in 1990. She has also pursued graduate studies at both George Washington University in Washington D.C. and at the University of Houston.

Irvine has had a plethora of professional experience; working at art institutions such as the Blaffer Gallery at the University of Houston, The Contemporary Arts Museum in Houston, SoCO Designs, Inc. in Austin, the Galveston Arts Center, and the Houston Center for Photography.

Most recently, Irvine served as the Senior Manager of Marketing Communications and Events for Lionstone Investments in Houston.

Irvine grew up in Beaumont and has deep connections with Lamar University.

*"My mother worked in Lamar's Foundation offices for many years, and being interested in art, I've always been familiar with Lamar and the Dishman,"* Irvine explains.

The Dishman Art Museum serves as a beacon for students across all disciplines, but especially serves the students of the Department of Art & Design. University museums hold a special place for Irvine, as she served as a student intern at the Blaffer Gallery at the University of Houston while pursuing her undergraduate degree. She was responsible for maintaining exhibition files, corresponding with artists, and conducting exhibition related research. She was also able to contribute to artist histories and bibliographies to *Reinventing Reality: Five Texas Photographers* (1990); all invaluable experiences to her as a student. She looks forward to bringing similar opportunities to the students at Lamar University.

*"University art museums are often able to move faster than many larger cultural institutions and therefore may be more adept at reflecting the pulse of the community at large. I think this is particularly true of organizations that present the work of students. The opportunity to network within your own backyard across disciplines is also a huge benefit of being part of a campus collective. That, and having the space to bring museum studies to the students through internships all contribute to the atmosphere of higher learning that is special to university art museums, and especially the Dishman,"* Irvine states.

Irvine is excited to return to Beaumont and looks forward to engaging the Southeast Texas community through her new role as the Museum Director of the Dishman Art Museum.

*"As part of the University, the Dishman exists in the unique place of having access to an abundance of expertise, art and otherwise, at its backdoor,"* says Irvine, *"It is my wish to create content that engages not only the art community at large but also brings in the perspectives of others on campus who can contribute to the wider discussions that art often encourages, be that a geologist, nurse, or interpretive dancer. Southeast Texas has a vibrant arts scene with AMSET, the Art Studio, Inc., the Symphony, and the Ballet, and the Dishman is an important part of the culture that our area offers."*

We wish Alex Irvine the best as she settles into her new role in December and look forward to seeing the exhibitions, projects and vibrant collaborations she brings to the Dishman Art Museum.

As we approach the winter months, there can be a lot on a person's mind. From holiday shopping and event planning to finals and projects, there are many stresses that come along with the season. But KVLU is here to help!

Night Light is an overnight show specially curated for peaceful sleep, lucid dreaming and relaxing mental, physical and spiritual states.

Previously known as "Sweet Dreams" or "Night Lab," the show originally only aired on weekends. "Night Light" has endlessly evolved over the past two decades, and now airs every night.

Elizabeth French, the show's curator, works to create a peaceful and serene show for all by hand choosing the music for every night of the year.

*"Choosing the music is pretty intuitive," says French, "I'm familiar with the music databases and I have some sort of idea what I want to play each hour. I also try to include artists that were in the previous news week, or seasonal and environmental themes. It's also a great format to feature longer works and live performances."*

French is also very interested in thinking about the lives of her listeners in order to assess their needs.

*"I just try to put myself in the listeners world and chose music I would like to listen to if I were awake at that time," French explains, "I just hope to provide a pleasant soundscape for overnight listeners who are looking for alternatives to commercial radio and music services. Something different and maybe surprising that just happens so you can relax and think about other things. I hope the show is helpful during the holidays, everyone needs to take time to*

# RELAX & UNWIND



*slow down all the thinking and decompress. Good thing the Night Light is on every night!"*

Leave your radio on all night to take in the tones of ambient soundscapes, nature sounds, new age, relaxing classical pieces and jazz ballads.

Night Light airs every day from 12:00 A.M. to 7:00 A.M. So, after you've spent the day planning your holiday menu, cramming for that final exam, or wrapping gifts for loved ones, wind down with Night Light on KVLU, 91.3 F.M.



# CAN'T MISS THIS!

NOV  
10

## **Percussion Ensemble Concert**

Rothwell Recital Hall

7:30 P.M.

NOV  
20

## **Wind Ensemble and Symphonic Band Concert**

Julie Rogers Theatre

7:30 P.M.

NOV — NOV  
20 — 22

## **Fall & Recovery**

Studio Theatre

[lamar.edu/lutdtix](http://lamar.edu/lutdtix)

DEC  
2

## **Cardinal Jazz Orchestra Concert**

University Theatre

7:30 P.M.

DEC  
5

## **Choir Holiday Concert**

Wesley Methodist Church

7:30 P.M.

DEC — DEC  
5 — 15

## **Hues in Harmony: Senior Thesis Exhibition**

Dishman Art Museum

*Closing Reception: December 12th, 3:00 P.M.*

## **GIVE NOW, EMPOWER THE FUTURE!**

Your generous support for the College of Fine Arts & Communication at Lamar University ensures that the arts and communication fields continue to grow and thrive. Your contribution, no matter the size, makes a lasting impact.

Donate today and invest in collaboration, innovation, creation and excellence.



**SCAN THE QR CODE OR VISIT [lamar.edu/cofacgiving](http://lamar.edu/cofacgiving) TO DONATE TODAY!**





COLLEGE OF FINE ARTS & COMMUNICATION  
**LAMAR UNIVERSITY**

**LAMAR UNIVERSITY**  
P.O. Box 10077  
Beaumont, TX 77710



***COLLABORATE - INNOVATE - CREATE***

To support the College of Fine Arts & Communication, please visit  
[\*\*www.lamar.edu/cofac\*\*](http://www.lamar.edu/cofac)