

# THE SHOWCASE OF SOUTHEAST TEXAS



## 2025 DRUMS AND FRONT AUDITION PACKET

# SNARE



Hello!

Thank you for your interest in LU Drums and Front. Congratulations on taking the first step to becoming a member! We are a group of musicians that aim to have fun through quality relationships and high-quality performance. The Showcase staff aims to provide a positive learning experience for all members, allowing you to transfer these skills and information to numerous outside disciplines.

The Showcase of Southeast Texas is a performance ensemble that entertains diverse crowds in multiple ways. We enjoy giving high energy performances to any crowd and take that same high energy approach to our preparation. The LU Drums and Front is a group that works hard, plays hard, and lifts each other up through teamwork. Being a part of this ensemble will entail high expectations where you will be asked to show up prepared, work outside of rehearsal time, and always pursue excellence. This will manifest itself in various forms including outside sectional times, additional playing events, and much more. While we appreciate talented musicians, we prioritize open-minded human beings who are willing to go the extra mile to make something exceptional and contribute to an encouraging environment.

Once auditions are over you will have a clear picture of where you stand with the Showcase. Within each section, spots are limited due to many factors, but we hope to get as many people involved as we can. Regardless of the outcome, we hope that you enjoy the process and learn from this experience. If you have any questions, always feel free to reach out to Dr. Reese Maultsby ([rmaultsby@lamar.edu](mailto:rmaultsby@lamar.edu)).

Thank you again! Have fun and good luck.

Sincerely,

LU Percussion Staff





# LU DRUMS AND FRONT 2025

## EXPERIENCE CAMPS

Two “Experience Camps” will be provided throughout the summer, and you are *highly* encouraged to attend both dates. The first camp will mainly focus on fundamentals along with the warmup exercises, while the second will focus on musical excerpts in preparation for the live audition.

Experience Camp #1 – Saturday, June 21<sup>st</sup>, 9:30am-4:00pm

Experience Camp #2 – Saturday, July 26<sup>th</sup>, 9:30am-4:00pm

Please register for these clinics here:

[https://www.lamar.edu/forms/music/drumline\\_chop\\_session\\_sign\\_up.html](https://www.lamar.edu/forms/music/drumline_chop_session_sign_up.html)

## AUDITION PROCESS

Auditions for LU Drums and Front will consist of 1) a preliminary video audition, and 2) a live audition. (\*Though, the video requirement will be waived if *both* experience camps are attended. Dates and details for both camps are above.)

1. Video audition: due August 1<sup>st</sup>, 11:59pm
2. Live audition/percussion mini-camp: August 9<sup>th</sup>-11<sup>th</sup>

The live audition will consist of a low-pressure “rehearsal” style weekend along with an individual audition which will include sight-reading. Further information and materials will be sent as they are available. Memorization of all materials is expected by the live audition.

## SEASON INFORMATION

Members must attend all rehearsals, sectionals, events, and games.

- Weekly percussion sectionals: Mondays 6:00pm-8:00pm
- Full band rehearsals: Tuesday/Thursday 1:30pm-3:25pm and Friday 1:50pm-3:10pm
- Gamedays will include morning rehearsals and extra activities, please plan to be with the Showcase the entire day of home games.
- Please reference the full season schedule and other important items in the season information packet (sent via email sometime this summer).

Lamar University Bands provides members with their first pair of drumsticks, but members must purchase their remaining stick needs throughout the season. Below is what we will use:

- Snare and Tenors: Innovative Percussion Tom Rarick (FS-TR)
- Bass Drums: Innovative Percussion Field Bass Series 1-5 (FBX 1-5)

Your safety is of the utmost importance to us. Please make sure you have a water bottle, athletic shoes, sunscreen, and hearing protection at every rehearsal. For hearing protection, any sort of hi-fidelity earplug will do, but our recommendation is Earasers Earplugs:

<https://www.earasers.net/collections/musicians-hifi-earplugs>

(alternatives like Vibes Hi-Fidelity Earplugs work great as well).

## COMMITMENT FORM

All members must submit their information through the 2025 Marching Band Commitment Form. If you haven't yet, **please fill it out now:** <http://www.lamar.edu/jointheshowcase>





## AUDITION INFORMATION

All members must audition and will be assessed equally. Returning members are not guaranteed spots, and music majors needing to fulfill graduation requirements are not guaranteed their primary instrument preference. All videos must be submitted by August 1<sup>st</sup>, and attendance/availability for the entirety of the live audition and band camp is expected.

If you have any questions, please reach out to Dr. Reese Maultsby ([rmaultsby@lamar.edu](mailto:rmaultsby@lamar.edu)).

## PREPARATION

Use a metronome | Create good sounds | Listen to yourself | Be yourself | Breathe

## VIDEO GUIDELINES

- Please make sure all stick heights, hands, playing surfaces, and feet are clearly visible.
  - Bass Drums: have the right-side drumhead face the camera.
- Performance instruments are preferable to pads/practice instruments, though it will not negatively affect your results if you are unable to access these instruments.
  - Snare Drums: we use traditional grip on a flat drum.
  - Mallets: any standard four-mallet grip is acceptable (Stevens, Burton, Traditional).
- An audible metronome is required during playback.
- Mark time to every exercise (LU Drums only).
- Individual takes of each exercise are acceptable as long as it is part of one whole video.
- Memorization is expected.
- Please upload your audition video to YouTube with either a public or unlisted publishing setting (NOT private, please).
- Submit your audition link through this form: <https://forms.gle/sX8NMcBPXdub37beA>

Mallets/Tenors: if you are truly unable to access an instrument (performance **or** practice), then please reach out to Dr. Reese Maultsby ([rmaultsby@lamar.edu](mailto:rmaultsby@lamar.edu)) for an alternative video assignment. Please make sure you exhaust all options (local band directors, renting, etc.) before reaching out. Current local LU students are exempt from this alternative option.

## RESULTS

This audition process is designed to demonstrate your best playing abilities so that all members know exactly what to prepare for the live audition. Due to many factors, the staff may ask you to prepare a different instrument for the live audition. We are looking for individuals who are willing to apply instructional comments and are open to trying new techniques, approaches, and mindsets. All members will know their standing at the conclusion of our percussion camp. When available, additional musical excerpts will be sent to all applicants for the live audition.

Good luck and have fun!





## VIDEO AUDITION REPERTOIRE

### Snares

**8's:** one rep @ 112 bpm and one @ 132 bpm

**Accent Tap:** one rep @ 116 bpm

**4-2-1 16<sup>th</sup> Note Grid:** one rep @ 98 bpm

**Stick Control:** two reps @ 104 bpm

**DDL.1:** one rep @ 164 bpm

**Rollz:** two reps @ 152 bpm

**Bookends:** one rep @ 116 bpm

Tenors (If your pad/drums only have one spock, you may play both spock parts on that single spock)

**8's:** one rep @ 112 bpm and one @ 132 bpm; 1<sup>st</sup> rep – up/down drums, 2<sup>nd</sup> rep – as written

**Accent Tap:** one rep @ 116 bpm

**4-2-1 16<sup>th</sup> Note Grid:** one rep @ 98 bpm

**Stick Control:** two reps @ 104 bpm; 1<sup>st</sup> rep – drum 2, 2<sup>nd</sup> rep – as written

**DDL.1:** one rep @ 164 bpm

**Rollz:** two reps @ 152 bpm; 1<sup>st</sup> rep – spock drum 2, 2<sup>nd</sup> rep – as written

**Bookends:** one rep @ 116 bpm

Bass (please pick one part for 4 exercises and a different part for the other 3)

**8's:** one rep @ 112 bpm and one @ 132 bpm; 1<sup>st</sup> rep – as written, 2<sup>nd</sup> rep – 2's

**Accent Tap:** one rep @ 116 bpm

**4-2-1 16<sup>th</sup> Note Grid:** one rep @ 98 bpm

**Stick Control:** two reps @ 104 bpm; 1<sup>st</sup> rep – unison/snare part, 2<sup>nd</sup> rep – as written

**DDL.1:** one rep @ 164 bpm

**Rollz:** two reps @ 152 bpm; 1<sup>st</sup> rep – unison/snare part, 2<sup>nd</sup> rep – as written

**Bookends:** one rep @ 116 bpm

Cymbals (please pick one part for 4 exercises and a different part for the other 3)

**8's:** 4 reps at 132 bpm; 1<sup>st</sup> rep – crashes, 2<sup>nd</sup> rep – crash chokes, 3<sup>rd</sup> rep – tap chokes, 4<sup>th</sup> rep – sizzles

**Accent Tap:** one rep @ 116 bpm

**4-2-1 16<sup>th</sup> Note Grid:** one rep @ 98 bpm

**DDL.1:** one rep @ 164 bpm

**Rollz:** two reps @ 152 bpm

**Bookends:** one rep @ 116 bpm

### Mallets

**7/8 Octaves:** one take – all 12 major keys, moving up chromatically @ 156 bpm

**One-Octave Long:** one take – all 12 major keys moving through the circle of 4ths @ 108 bpm

**Chromatics:** one rep @ 124 bpm

**London Bridge:** C major, G major, F major, and D major @ 112 bpm

**London Bridge Variations (1324):** Bb major, A major, Eb major, and E major at 112 bpm

**London Bridge Variations (4321):** Ab major, B major, F# major, and C# major



# Warm Up Sequence

2025 LU Drums

8's

4/4

*f*

5

Drum notation for the '8's' exercise. It consists of two staves. The top staff is in 4/4 time and contains four measures of eighth notes, each with an accent (>) and a dynamic marking of *f*. The bottom staff is in 5/4 time and contains four measures of eighth notes, each with an accent (>) and a dynamic marking of *f*. The notation includes right (R) and left (L) hand indicators and a double bar line at the end of the second staff.

Accent Tap

4/4

*f*

5

Drum notation for the 'Accent Tap' exercise. It consists of two staves. The top staff is in 4/4 time and contains four measures of eighth notes, each with an accent (>) and a dynamic marking of *f*. The bottom staff is in 5/4 time and contains four measures of eighth notes, each with an accent (>) and a dynamic marking of *f*. The notation includes right (R) and left (L) hand indicators and a double bar line at the end of the second staff.

4-2-1 16th Note Grid

4/4

*f*

5

Drum notation for the '4-2-1 16th Note Grid' exercise. It consists of two staves. The top staff is in 4/4 time and contains four measures of 16th notes, each with an accent (>) and a dynamic marking of *f*. The bottom staff is in 5/4 time and contains four measures of 16th notes, each with an accent (>) and a dynamic marking of *f*. The notation includes right (R) and left (L) hand indicators and a double bar line at the end of the second staff.

Stick Control

4/4

*f*

5

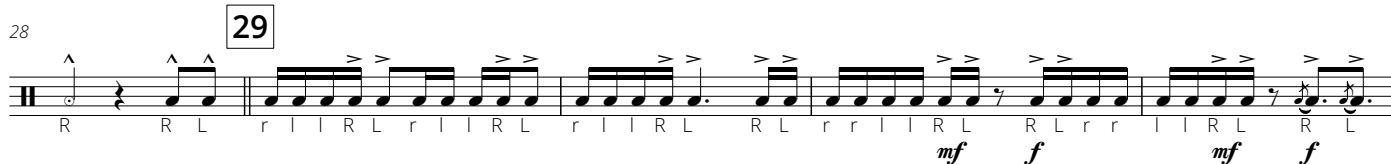
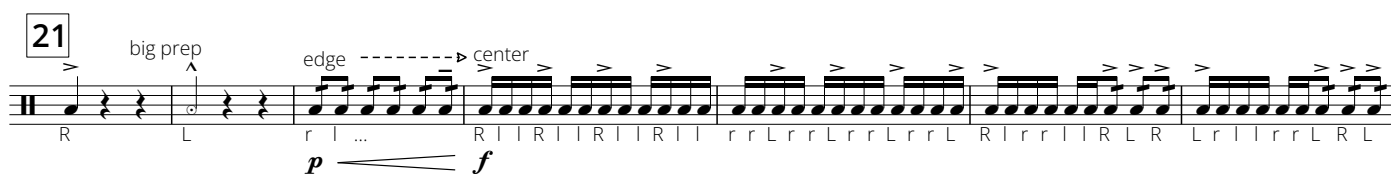
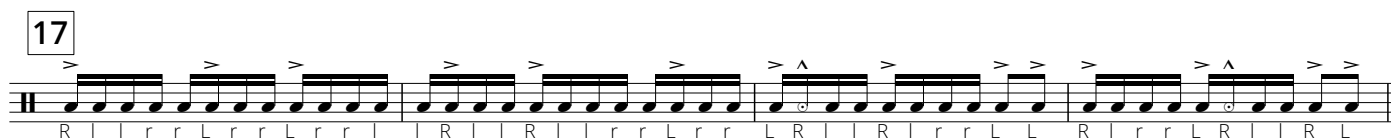
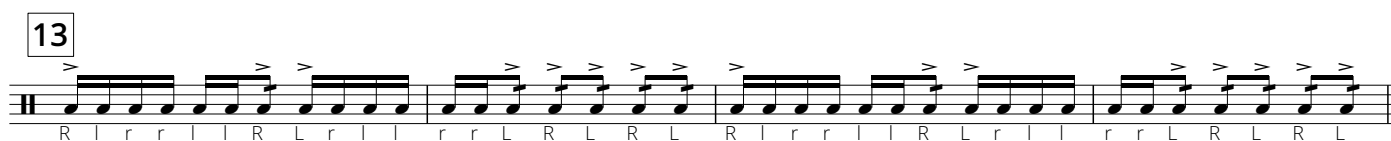
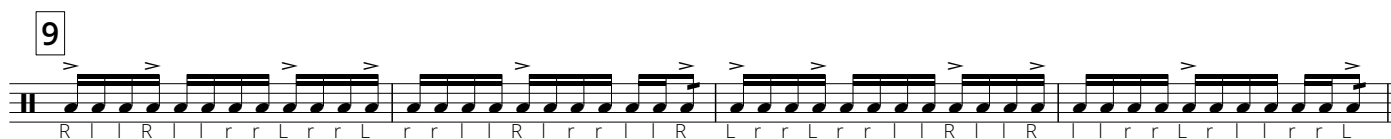
Drum notation for the 'Stick Control' exercise. It consists of two staves. The top staff is in 4/4 time and contains four measures of 16th notes, each with an accent (>) and a dynamic marking of *f*. The bottom staff is in 5/4 time and contains four measures of 16th notes, each with an accent (>) and a dynamic marking of *f*. The notation includes right (R) and left (L) hand indicators and a double bar line at the end of the second staff.

9

buzz crush

12

Drum notation for the '9' exercise. It consists of two staves. The top staff is in 4/4 time and contains four measures of eighth notes, each with an accent (>) and a dynamic marking of *f*. The bottom staff is in 5/4 time and contains four measures of eighth notes, each with an accent (>) and a dynamic marking of *f*. The notation includes right (R) and left (L) hand indicators and a double bar line at the end of the second staff.

**DDL.1 - Mike Jackson**

**Rollz**

5

9

13

17

19

21

24

*p* *fp* *fp* *fp* *f* *f* *p*

to edge

Detailed description: This musical score for snare drum, titled 'Rollz', is in 4/4 time. It consists of six staves of music. The first staff begins with a *p* (piano) dynamic and features a series of triplet eighth notes, some of which are beamed together. The second staff continues with triplet eighth notes. The third staff starts at measure 9 with a *fp* (fortissimo piano) dynamic and includes accents (>) on some notes. The fourth staff starts at measure 13 with *fp* dynamics and accents. The fifth staff starts at measure 17 with *fp* dynamics and accents, and includes a crescendo leading to a *f* (forte) dynamic. The sixth staff starts at measure 21 with a *p* dynamic, followed by a crescendo to *f*, and then a decrescendo back to *p*. The final measure of the sixth staff is marked 'to edge' with a dashed line and an arrow.

**Bookends - Mike Jackson**

3

5

9

11

*f*

Detailed description: This musical score for snare drum, titled 'Bookends - Mike Jackson', is in 4/4 time. It consists of three staves of music. The first staff begins with a *f* (forte) dynamic and features a series of eighth notes with accents (>) and a triplet of eighth notes. The second staff continues with eighth notes and accents, and includes a triplet of eighth notes. The third staff starts at measure 9 with a triplet of eighth notes and accents. The fourth staff starts at measure 11 with a triplet of eighth notes and accents. The final measure of the fourth staff is marked with a double bar line and a repeat sign.



# LU Drums Notation Key

**Snares**

RH/LH Double Stop Ping Rim Shot Full Shot (Gawk) Diddle/Double Buzz Roll (Meter of Roll) Buzz Crush (Wet/Long) Buzz Crush (Dry/Short) Stick Shot Back Stick Cross Stick Stick Click Rim

**Tenors**

Spock 1 Spock 2 Drums 1 2 3 4 RH/LH RH/LH Crossover Rim Shot Skank (Muffle w/ LH) Diddle/Double Buzz Roll (Meter of Roll) Buzz Crush (Wet/Long) Buzz Crush (Dry/Short) Rim (3/4 Drums) Stick Click

**Bass Drums**

Drums 1 2 3 4 5 Rim (Solo/Split) Mute (w/ opposite hand) Rim Shot Slap Shot (mute w/ lh. rh fist, shaft, & mallet hit head @ same time) Unison Unison Rim

**Cymbals**

Parts 1 2 3 4 1&2 3&4 Unison Crash (Horizontal=HC Vertical=VC) Crash Choke Sizzle Hi-Hat Sizzuck Smash Taps Tap Choke Klick/Klunks