



## CARDINAL JAZZ ORCHESTRA AUDITIONS

### Guitar (Rhythm Section) Packet

This audition packet is for bassists interested in performing with the **Lamar University Cardinal Jazz Orchestra** as a member of the rhythm section. Participation in the LCJO is an amazing experience and all students, regardless of major, are encouraged to audition. All members of the LCJO are given a modest scholarship each semester and there are wonderful performance experiences provided throughout the academic year. *(For more information, please visit the [Lamar University Cardinal Jazz Orchestra website](#) or [email the director, Dr. Banister.](#))*

**Auditions for Rhythm Section (including guitar) will be held on Thursday, August 21<sup>st</sup>, at 4:00 PM in the Music Building Band Hall (room 128).**

This year's **GUITAR** (rhythm section) audition will consist of performing the two excerpts found starting on page 2 of this packet.

- “**Return of the Storm**” by Jeff Jarvis [beginning-rehearsal 65] ([pages 2-5](#))
- “**Intersection**” by Christine Jensen [be prepared to play the entire chart] ([pages 6-9](#))

You are strongly encouraged to listen to a recording to better understand the concept and style. Recordings can be found by searching on YouTube by title and arranger *(if applicable.)*

If you have any questions regarding Rhythm Section auditions, or if you are interested in auditioning but are unable to attend the auditions on Thursday, August 21 at 4:00pm, please contact Dr. Banister at [lbanner@lamar.edu](mailto:lbanner@lamar.edu).

For more detailed information on the Cardinal Jazz Orchestra audition process, including scheduling, policies and procedures, please visit:

[fineartscomm.lamar.edu/bands/ensembles/jazz-orchestra/auditions](http://fineartscomm.lamar.edu/bands/ensembles/jazz-orchestra/auditions)

# RETURN OF THE STORM

AFRO-CUBAN FUNK ♩. = 120

JEFF JARVIS

as is

12/8

1

2

3

4

5

6

7

8

9

10

11

12

13

14

15

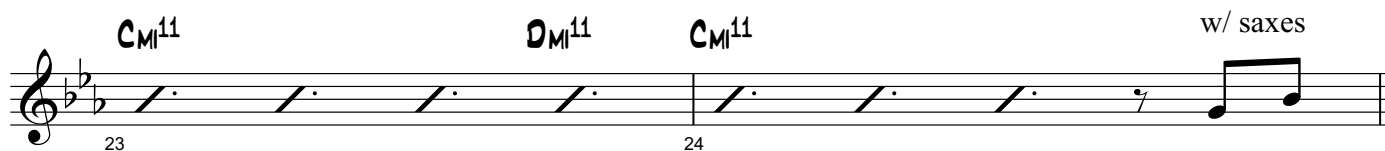
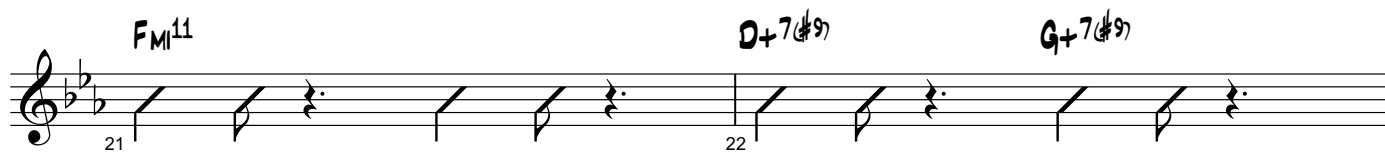
16

w/ tpts.

w/ bass

## GUITAR

17



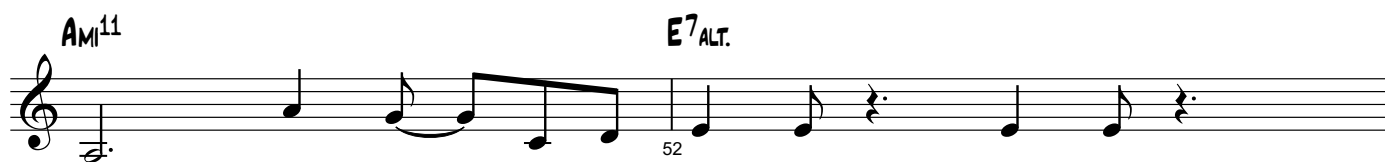
25



33



## GUITAR



## GUITAR

w/ bass

AM<sup>11</sup> E<sup>7</sup>ALT. AM<sup>11</sup>

54

56 E<sup>7</sup>ALT. 57 AM<sup>11</sup> E<sup>7</sup>ALT. 58

59 AM<sup>11</sup> 60 E<sup>7</sup>ALT. 61 AM<sup>11</sup>

62 E<sup>7</sup>ALT. 63 AM<sup>11</sup> 64 E<sup>7</sup>ALT.

65 as is *f*

68 70

71 w/ tpts. 72

73 74

Detailed description: This is a guitar score for measures 53 through 74. The notation is in treble clef. Measures 53-56 are in a key with one sharp (F#) and contain eighth and quarter notes. Measure 57 is a repeat sign. Measures 58-64 are in a key with two sharps (F# and C#) and contain eighth and quarter notes. Measure 65 is marked '65 as is' and 'f' (forte), starting with a quarter rest followed by eighth and quarter notes. Measures 66-70 are in a key with two flats (Bb and Eb) and contain eighth and quarter notes. Measure 71 is marked '71 w/ tpts.' and contains eighth and quarter notes. Measures 72-74 are in a key with two flats (Bb and Eb) and contain eighth and quarter notes. Chord symbols AM<sup>11</sup> and E<sup>7</sup>ALT. are placed above the staff at various points.

Guitar

# Intersection

Christine Jensen  
(2001, rev. 2018)

Swing (♩ = 176)

1-4 4 5-8 4 A (mel.) mp 10-12 3

13 15-16 2

18 mf 19-20 2

23-24 2 27-28 2

30 f (break)

B Open Tenor Solo C On Cue - Backgrounds In (mel.) ff

35-38 4 mp 40-42 3

43 45-46 2

48 mf 49-50 2

Copyright © 2018 Christine Jensen (SOCAN) | Printed with permission by Les Éditions Whitewater / Whitewater Music Publications

Layout and graphics © 2018 Les Éditions Whitewater / Whitewater Music Publications.

Duplication of any kind, including by photocopying and PDF, is prohibited by law. | All Rights Reserved. Made in Canada.

2

53-54

57-58

59

**D**

4

65-68

*mf*

*f*

*ff*

73

**E** 4x - Solos

A-9 FΔ(#11)

A-9 FΔ(#11)

81

A-9 FΔ(#11)

A-9 FΔ(#11)

85

D-9 B $\flat$ Δ(#11)

D-9 B $\flat$ Δ(#11)

89

A-9 FΔ(#11)

A-9 FΔ(#11)

93

G $\flat$ Δ(#11) E $\flat$ Δ(#11)

G $\flat$ Δ(#11) E $\flat$ Δ(#11)

97

FΔ(#11) D-9

FΔ(#11) D-9

5/4

**F** F<sup>Δ</sup> D-7 G/B G<sup>♯</sup>O(Δ) C7(SUS) 1.2.3.

**G** Open Piano Solo C7(SUS) (rhy. section gradually drops out...)

**H** Piano Alone

**I** On Cue: Rhythm Returns C7(SUS)

**J** On Cue: Horns In C7(ADD 4) mp 121-122

123 C7(ADD 4) B<sup>b</sup>Δ(♯11) E-9

129 B<sup>b</sup>Δ G-9 D-9 f ff 133-134



G-9 EbΔ(#11) DΔ(#11)/E DΔ B-9

135

**K** Drum Solo

*ff*

**L**

*f*

**M**

*mp*

**N** Open Drums **O** On Cue

4

154-157

158 *mp*

**P** Melody Enters

*mf*

**Q** 4x - Trumpet Solo

**R** Open For Trumpet

**S** On Cue - 3x

**T**