



CARDINAL JAZZ ORCHESTRA AUDITIONS

Bass (Rhythm Section) Packet

This audition packet is for bassists interested in performing with the **Lamar University Cardinal Jazz Orchestra** as a member of the rhythm section. Participation in the LCJO is an amazing experience and all students, regardless of major, are encouraged to audition. All members of the LCJO are given a modest scholarship each semester and there are wonderful performance experiences provided throughout the academic year. *(For more information, please visit the [Lamar University Cardinal Jazz Orchestra website](#) or [email the director, Dr. Banister.](#))*

Auditions for Rhythm Section (including bass) will be held on Thursday, August 21st, at 4:00 PM in the Music Building Band Hall (room 128).

This year's **BASS** (rhythm section) audition will consist of performing the two excerpts found starting on page 2 of this packet.

- “**Return of the Storm**” by Jeff Jarvis [beginning-rehearsal 65] ([pages 2-4](#))
- “**Intersection**” by Christine Jensen [be prepared to play the entire chart] ([pages 5-9](#))

You are strongly encouraged to listen to a recording to better understand the concept and style. Recordings can be found by searching on YouTube by title and arranger *(if applicable.)*

If you have any questions regarding Rhythm Section auditions, or if you are interested in auditioning but are unable to attend the auditions on Thursday, August 21 at 4:00pm, please contact Dr. Banister at ibanister@lamar.edu.

For more detailed information on the Cardinal Jazz Orchestra audition process, including scheduling, policies and procedures, please visit:

fineartscomm.lamar.edu/bands/ensembles/jazz-orchestra/auditions

BASS

RETURN OF THE STORM

AFRO-CUBAN FUNK ♩. = 120

JEFF JARVIS

as is



9



F_M11

D+7(#9)

G+7(#9)

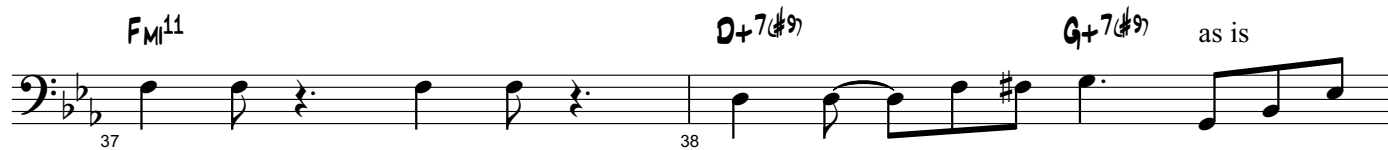
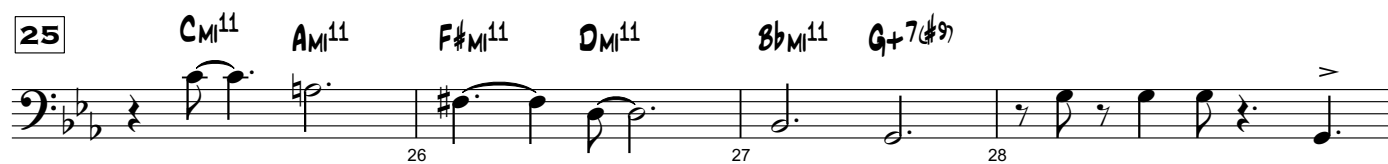


w/ gtr.



17





41 C_{M11} A_{M11} $F\#_{M11}$ D_{M11} $B\flat_{M11}$ $G+7(\#9)$

w/ gtr.

49 A_{M11} $E^7_{ALT.}$

A_{M11} $E^7_{ALT.}$

A_{M11} $E^7_{ALT.}$ A_{M11} $E^7_{ALT.}$

57 A_{M11} $E^7_{ALT.}$ A_{M11} $E^7_{ALT.}$

A_{M11} $E^7_{ALT.}$ A_{M11} $E^7_{ALT.}$

65 $E^7_{ALT.}$

Bass

Intersection

Christine Jensen
(2001, rev. 2018)

Swing (♩ = 176)

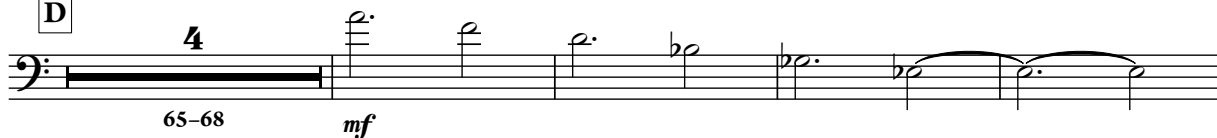


2

B Open Tenor Solo

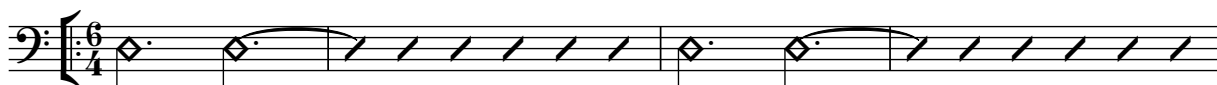
(as is, then gradually move to comping...)

Intersection - Bass

**C** On Cue - Backgrounds In**D****E** 4x - Solos

A-9 FΔ(♯11)

A-9 FΔ(♯11)

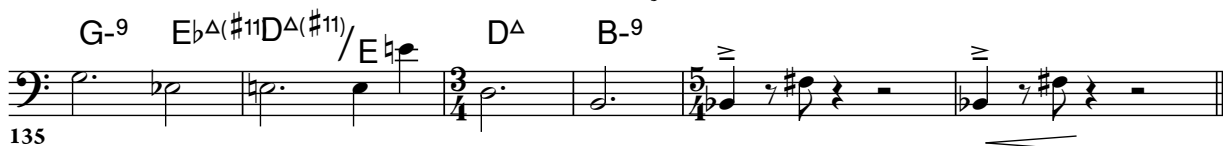
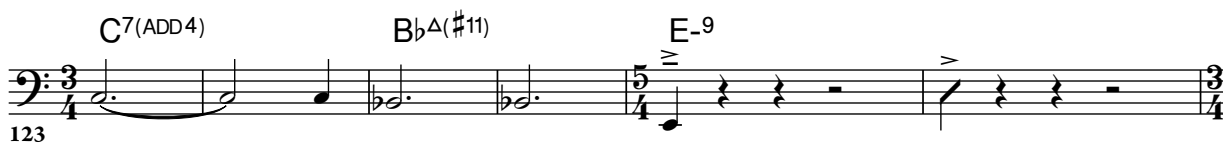


(rhy. section gradually drops out...)

I On Cue: Rhythm Returns
C7(SUS)



J On Cue: Horns In
C7(ADD4)



K Drum Solo



L



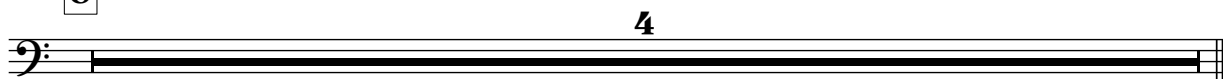
M



N Open Drums



O On Cue



158 *mp*

P Melody Enters

mf

Q 4x - Trumpet Solo

R Open For Trumpet

S On Cue - 3x

T

The image displays a single-staff musical score in bass clef with a key signature of one sharp (F#). The notation consists of six systems, each containing four measures. The first system begins with the measure number '158' and the dynamic marking 'mp'. The second system includes the instruction 'P Melody Enters' and the dynamic 'mf'. The third system is marked 'Q 4x - Trumpet Solo'. The fourth system is marked 'R Open For Trumpet'. The fifth system is marked 'S On Cue - 3x'. The sixth system is marked 'T'. The melody is composed of eighth and quarter notes, with rests in the second and fourth measures of each system. The final measure of the sixth system features an accent (^) over the final note.