

01/30/2019

Statistics means never having to say you are certain.

Ask organizations:

Where do your students study?

for how long

How many of students attend?

Sample different majors where and why?

Quiet enclosed spaces vs open spaces.

Outcome?

↳ Why do you study?

How much do you get done in different locations?

How successful?

Observational study.

How many people in the location?

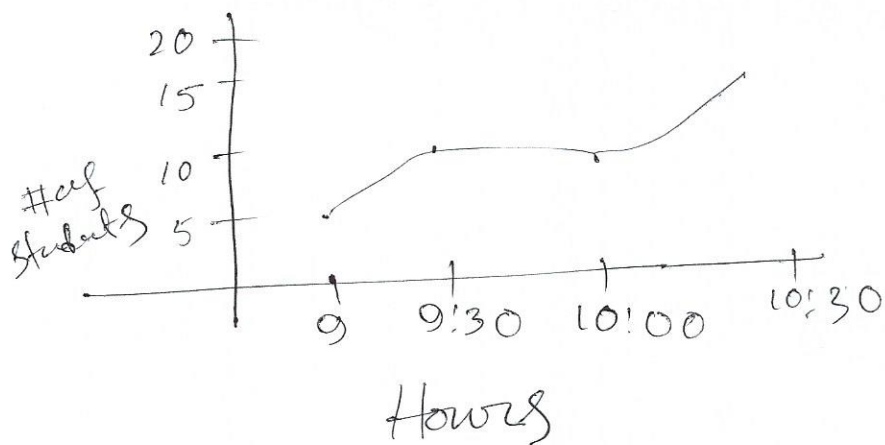
How long do you study?

Measuring the popularity after seeing observing day attendance in a particular place.

Discrete data - has a finite # of chances.

Continuous data - Has a infinite number of choices.

Time series data: data gathered at regular ~~the~~ time intervals



$$\% \text{ Hours of sleeping} = \frac{8.8}{24} \times 100 \\ = 36.66\%$$

$$\text{work} = \frac{2.3}{24} \times 100 = 9.58\%$$

