

$$\frac{4}{3} \cdot \frac{5}{6}$$

$$= \frac{\cancel{2} \cdot 2 \cdot 5}{3 \cdot \cancel{2} \cdot 3}$$

$$= \frac{10}{9}$$

$$* \frac{a}{b} + \frac{c}{b} = \frac{a+c}{b}$$

$$\frac{a}{b} - \frac{c}{b} = \frac{a-c}{b}$$

$$14) \frac{1}{21} + \frac{13}{21}$$

$$= \frac{1+13}{21}$$

$$= \frac{14}{21}$$

$$= \frac{\cancel{2} \cdot 7}{\cancel{3} \cdot 7}$$

$$= \frac{2}{3}$$

$$18) \frac{7}{18} + \frac{22}{18} + \frac{10}{18}$$

$$= \frac{7+22+10}{18}$$

$$= \frac{39}{18}$$

$$= \frac{\cancel{3} \cdot 13}{\cancel{2} \cdot 3 \cdot 2}$$

$$= \frac{13}{6}$$

$$15) \frac{13}{6} - \frac{5}{6}$$

$$= \frac{13-5}{6}$$

$$= \frac{8}{6}$$

$$= \frac{4}{3}$$

$$20) \frac{19}{6} - \frac{11}{6} + \frac{5}{6}$$

$$= \frac{19-11+5}{6}$$

$$= \frac{13}{6}$$

$$24) \frac{5}{18} + \frac{7}{18} - \frac{11}{18}$$

$$= \frac{5+7-11}{18}$$

$$= \frac{1}{18}$$

$$26) \frac{11a}{4b} + \frac{7a}{4b}$$

$$= \frac{11a+7a}{4b}$$

$$= \frac{18a}{4b}$$

$$\frac{1}{18} + \frac{1}{30}$$

$$= \frac{1}{18} \cdot \frac{5}{5} + \frac{1}{30} \cdot \frac{3}{3}$$

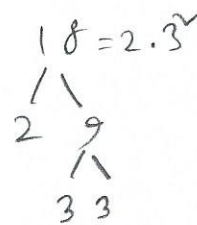
$$= \frac{5}{90} + \frac{3}{90}$$

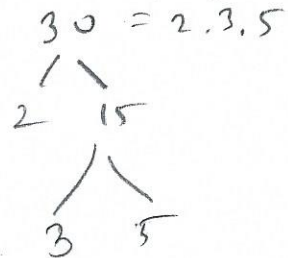
$$= \frac{8}{90}$$

$$= \frac{4}{45}$$

$$25) \frac{3y}{2w} + \frac{5}{2w}$$

$$= \frac{3y+5}{2w}$$

$$18 = 2 \cdot 3^2$$


$$30 = 2 \cdot 3 \cdot 5$$


$$31) \frac{1}{15} + \frac{1}{10}$$

$$= \frac{1}{15} \cdot \frac{2}{2} + \frac{1}{10} \cdot \frac{3}{3}$$

$$= \frac{2}{30} + \frac{3}{30}$$

$$= \frac{2+3}{30}$$

$$= \frac{5}{30}$$

$$= \frac{1}{6}$$

$$\begin{aligned}
 39) \quad & \frac{10}{9} + \frac{5}{12} \\
 & = \frac{10}{9} \cdot \frac{4}{4} + \frac{5}{12} \cdot \frac{3}{3} \\
 & = \frac{40}{36} + \frac{15}{36} \\
 & = \frac{40+15}{36} \\
 & = \frac{55}{36}
 \end{aligned}$$

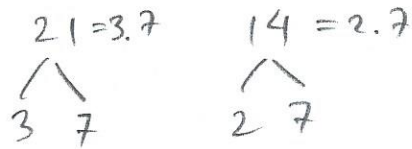
$$\begin{array}{c}
 9 = 3^2 \\
 \swarrow \quad \searrow \\
 3 \quad 3
 \end{array}$$

$$\begin{array}{c}
 12 = 2^2 \cdot 3 \\
 \swarrow \quad \searrow \\
 2 \quad 6 \\
 \quad \swarrow \quad \searrow \\
 \quad 2 \quad 3
 \end{array}$$

$$\begin{aligned}
 & \frac{5}{3} + \frac{5}{8} - \frac{7}{6} \\
 & = \frac{5}{3} \cdot \frac{8}{8} + \frac{5}{8} \cdot \frac{3}{3} - \frac{7}{6} \cdot \frac{4}{4} \\
 & = \frac{40}{24} + \frac{15}{24} - \frac{28}{24} \\
 & = \frac{40+15-28}{24} \\
 & = \frac{55-28}{24} \\
 & = \frac{27}{24} \\
 & = \frac{9}{8}
 \end{aligned}$$

$$\begin{aligned}
 3 & = 3 \\
 8 & = 2 \cdot 2 \cdot 2 \\
 6 & = 2 \cdot 3
 \end{aligned}$$

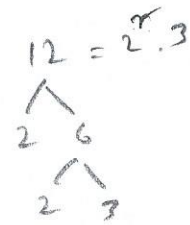
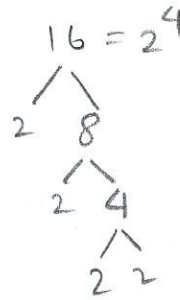
14) Find L.C.M
21 and 14



$$\begin{aligned} \text{L.C.M (21 \& 14)} &= 3 \cdot 2 \cdot 7 \\ &= 42 \end{aligned}$$

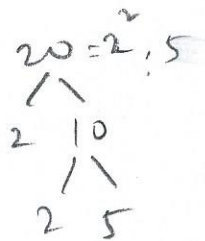
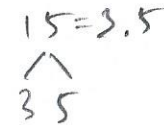
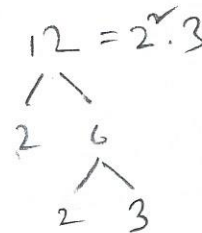
15) 16 & 12

$$\begin{aligned} \text{L.C.M} &= 2^4 \cdot 3 \\ &= 48 \end{aligned}$$



25) 12, 15, 20

$$\begin{aligned} \text{L.C.M} &= 2^2 \cdot 3 \cdot 5 \\ &= 60 \end{aligned}$$



27) 16, 24, 30

$$\begin{aligned} \text{L.C.M} &= 2^4 \cdot 3 \cdot 5 \\ &= 240 \end{aligned}$$

