

Practice Assessment unit 2

30a)

$$0.5 = \frac{5000}{10,000}$$

$$0.505 = \frac{5050}{10,000}$$

$$0.5555 = \frac{5555}{10,000}$$

$$0.055 = \frac{550}{10,000}$$

$$0.0505 = \frac{505}{10,000}$$

$$0.5505 = \frac{5505}{10,000}$$

$$0.5055 = \frac{5055}{10,000}$$

$$\frac{11}{20} = 0.55 = \frac{5500}{10,000}$$

0.0505, 0.055, 0.5, 0.505, 0.5055, $\frac{11}{20}$, 0.5505, 0.5555

$$30b) \quad 0.44 = \frac{4400}{10000}$$

$$0.0404 = \frac{404}{10000}$$

$$0.044 = \frac{440}{10000}$$

$$0.4404 = \frac{4404}{10000}$$

$$0.404 = \frac{4040}{10000}$$

$$0.4044 = \frac{4044}{10000}$$

$$0.4444 = \frac{4444}{10000}$$

$$\frac{1}{25} = 0.04 = \frac{400}{10000}$$

$\frac{1}{25}$, 0.0404, 0.044, 0.404, 0.4044, 0.44, 0.4404, 0.4444

or,

↓ ↓

0.4400

→ 0.0(4)04

→ 0.0(4)40

0.4404

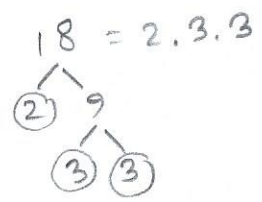
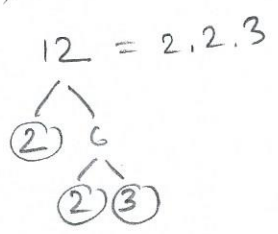
0.4040

0.4044

0.4444

① → 0.0(4)00

5) 12 and 18

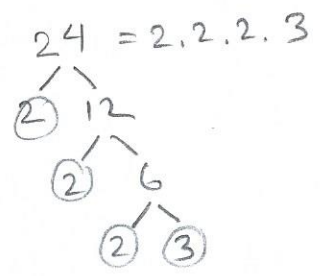
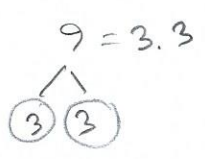


LCM = 2.2.3.3 = 36

or,

	1	2	3
12	12	24	36
18	18	36	

7) 9 and 24



LCM = 2.2.2.3.3 = 72

$$10) 14, 12, 21, 28$$

$$14 = 2 \cdot 7$$

$$12 = 2 \cdot 2 \cdot 3$$

$$21 = 3 \cdot 7$$

$$28 = 2 \cdot 2 \cdot 7$$

$$\text{LCM} = 2 \cdot 2 \cdot 3 \cdot 7 = 84$$

$$12) \frac{1}{3} + \frac{3}{8} + \frac{1}{4}$$

$$= \frac{1}{3} \cdot \frac{8}{8} + \frac{3}{8} \cdot \frac{3}{3} + \frac{1}{4} \cdot \frac{6}{6}$$

$$= \frac{8}{24} + \frac{9}{24} + \frac{6}{24}$$

$$= \frac{23}{24}$$

$$16) 4\frac{6}{7} + 5\frac{1}{2}$$

$$= 4\frac{6}{7} \cdot \frac{2}{2} + 5\frac{1}{2} \cdot \frac{7}{7}$$

$$= 4\frac{12}{14} + 5\frac{7}{14}$$

$$= 9\frac{19}{14}$$

$$= 9 + 1\frac{5}{14}$$

$$= 10\frac{5}{14}$$

$$18) 8 \frac{2}{15} - 6 \frac{1}{2}$$

$$= 8 \frac{2}{15} \cdot \frac{2}{2} - 6 \frac{1}{2} \cdot \frac{15}{15}$$

$$= 8 \frac{4}{30} - 6 \frac{15}{30}$$

$$= 7 + 1 \frac{4}{30} - 6 \frac{15}{30}$$

$$= 7 \frac{34}{30} - 6 \frac{15}{30}$$

$$= 1 \frac{19}{30}$$

$$19a) \frac{3}{5} > \frac{4}{7}$$

$$\frac{3}{5} \cdot \frac{7}{7}$$

$$\frac{4}{7} \cdot \frac{5}{5}$$

$$\frac{21}{35}$$

$$\frac{20}{35}$$

$$20) \frac{4}{9} + \frac{7}{5} \left(\frac{5}{6} \right)$$

$$= \frac{4}{9} \cdot \frac{2}{2} + \frac{7}{5} \cdot \frac{3}{3}$$

$$= \frac{8}{18} + \frac{21}{18}$$

$$= \frac{29}{18}$$

$$\left(\frac{4}{9} + \frac{7}{5} \right) \left(\frac{5}{6} \right)$$

$$= \left(\frac{4}{9} \cdot \frac{5}{5} + \frac{7}{5} \cdot \frac{9}{9} \right) \left(\frac{5}{6} \right)$$

$$= \left(\frac{20}{45} + \frac{63}{45} \right) \left(\frac{5}{6} \right)$$

$$= \frac{83}{45} \cdot \frac{5}{6}$$

$$= \frac{83}{54}$$