

Tri Le  
MATH 1314  
College Algebra  
Mr. Brice

11/5/18



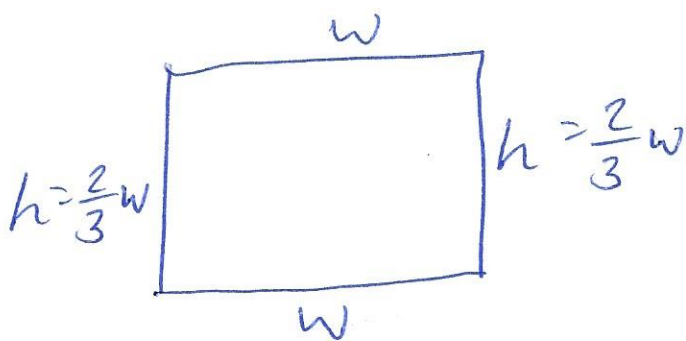
distance = rate · time ( $d = rt$ )

$$r = \frac{d}{t} ; t = \frac{d}{r}$$

---

$A_{\Delta} = \frac{b \cdot h}{2}$  ;  $b = \text{base}$ ,  $h = \text{height}$   
 $A_{\Delta} = \text{area of a triangle}$

---



$$3 = P = 2w + \frac{4}{3}w$$

$$\Rightarrow \frac{3}{10}(3) = \left(\frac{3}{10}\right)\left(\frac{10}{3}\right)w$$

$$\Rightarrow w = \frac{9}{10}$$