

11/2/18

Ex: A family has a monthly mortgage payment of \$500, which is 16% of their monthly income. What is their monthly income?

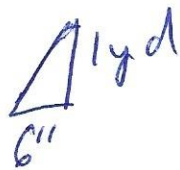
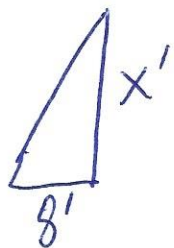
Restate: \$500 is 16% of ~~total~~ monthly income.

Ex: Course grade: $\frac{84+92+87+X}{4} = 90$

$$\Rightarrow \frac{263+X}{4} = 90$$

$$\Rightarrow X = 97$$

$$\frac{\text{Object \#1}}{\text{shadow \#1}} = \frac{\text{object \#2}}{\text{shadow \#2}}$$



$$\Rightarrow \frac{X'}{8'} = \frac{1 \text{ yd}}{6''}, \quad 1 \text{ yd} = 36''$$

$$\Rightarrow \frac{X'}{8'} = \frac{36''}{6''}$$

$$\Rightarrow \frac{x}{8} = \frac{36}{6}$$

As long as the units are consistent in a fraction, they can be omitted.

$$\Rightarrow 6x = 288 \text{ (cross multiply)}$$

$$\Rightarrow x = 48'$$