

10/12/2018

PRESENTATION

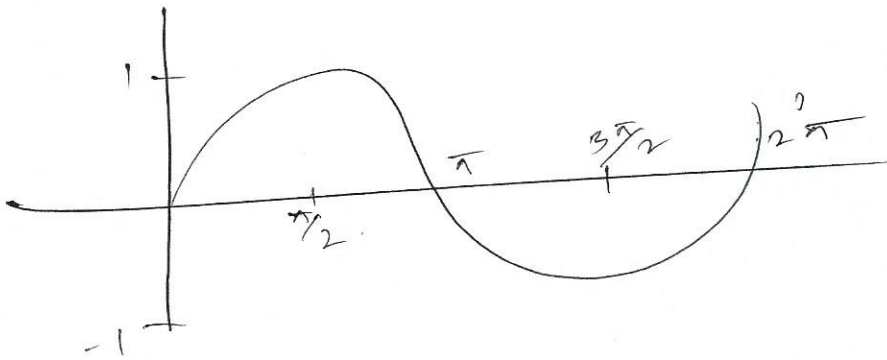
$$y = 5/3 \sin(-2/3\pi x)$$

$$= -5/3 \sin\left(\frac{2\pi}{3}x\right)$$

↪ vertical

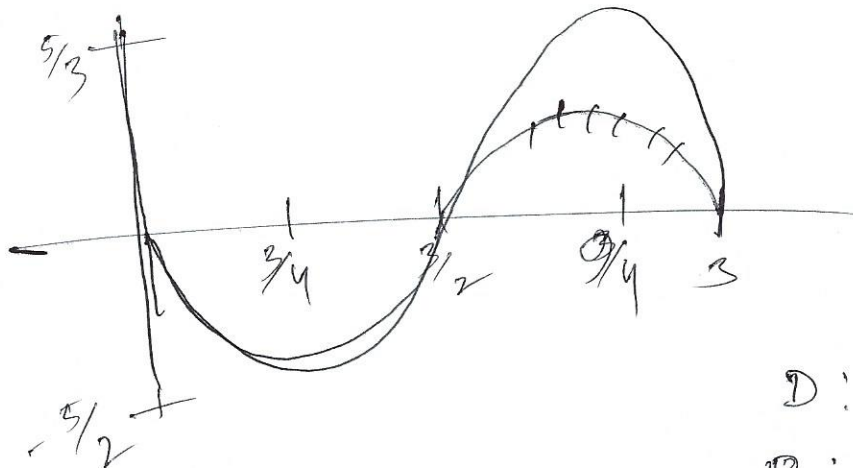
↪ Horizontal stretch.
 reflection about y-axis

$$y = \sin x$$



$$\frac{2\pi}{3} = \frac{2\pi}{T}$$

$$T = \frac{3}{2}$$



$$\frac{3}{4} + \frac{3}{2}$$

$$\frac{3+6}{4}$$

$$D: (-\infty, \infty)$$

$$R: \left[-\frac{5}{3}, \frac{5}{3}\right]$$