





YOUR MOMENT IS HERE



There is no better moment to be at Lamar University than right now, because we are focused, first and foremost, on your success. We facilitate one-on-one advising and offer tutoring and mentoring programs. We have coaches who help you with everything from navigating course schedules to learning more efficient time management techniques. Additionally, your learning moments here at LU can be enhanced by study abroad opportunities, undergraduate research and co-operative work programs. Because our faculty-to-student ratio is one of the lowest in the state, 1 to 19, you will never be a number. At Lamar University, we're going to know you and help you achieve your distinct goal.

College is more than academics, it's an experience to be enjoyed. We're committed to providing a collegial environment. I like Starbucks as much as you, so we have one in the first level of our library, which is a short walk to the hub of student life, the newly renovated Setzer Student Center. Here you'll discover hundreds of student clubs and organizations. At our state-of-the-art recreation center, you'll find all sorts of intramural sports with everything from cricket to dodgeball. Experience college life by tailgating before football games. Football is just one of our 17 NCAA Division I men's and women's sports competing in the Southland Conference. Join a sorority or fraternity. The opportunities for college moments, experiences you'll never forget and friendships you make for a lifetime await you at LU.

We look forward to helping you make the most of your college moments here at Lamar University.

Best wishes,

President Ken Evans



1 of 28
four-year public universities
nationally named a
DOCTORAL RESEARCH UNIVERSITY
by the CARNEGIE CLASSIFICATION

KELSEY TRAN

SENIOR
Pre-Dental
Nederland, TX

Lamar University has offered me an overwhelming amount of opportunities. At LU, I am able to excel in my classes, get involved in many organizations and gain valuable skills from my learning experiences. The 19:1 student-to-faculty ratio is one of the best qualities that LU has to offer because I can easily communicate with my professors and collaborate with my classmates. Ultimately, it has helped me gain a research position on campus! Conducting research has allowed me to develop a background in the research process, gain critical thinking and analytic skills, and enhance my career choice of becoming a dentist."

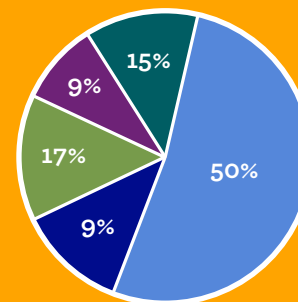
Pre-Dental Society,
Zeta Tau Alpha,
Honor's Student Association,
LU Social Media Street Team

17 NCAA Division I ATHLETIC TEAMS

Baseball ♂
Basketball ♀♂
Cross Country ♀♂
Football ♂
Golf ♀♂

Soccer ♀
Softball ♀
Tennis ♀♂
Track & Field ♀♂
Volleyball ♀

JUST THE FACTS



Undergraduate students by college

Arts & Sciences 4,190

Business 1,118

Education & Human Development 728

Engineering 1,402

Fine Arts & Communication 765
8,203



42%
male

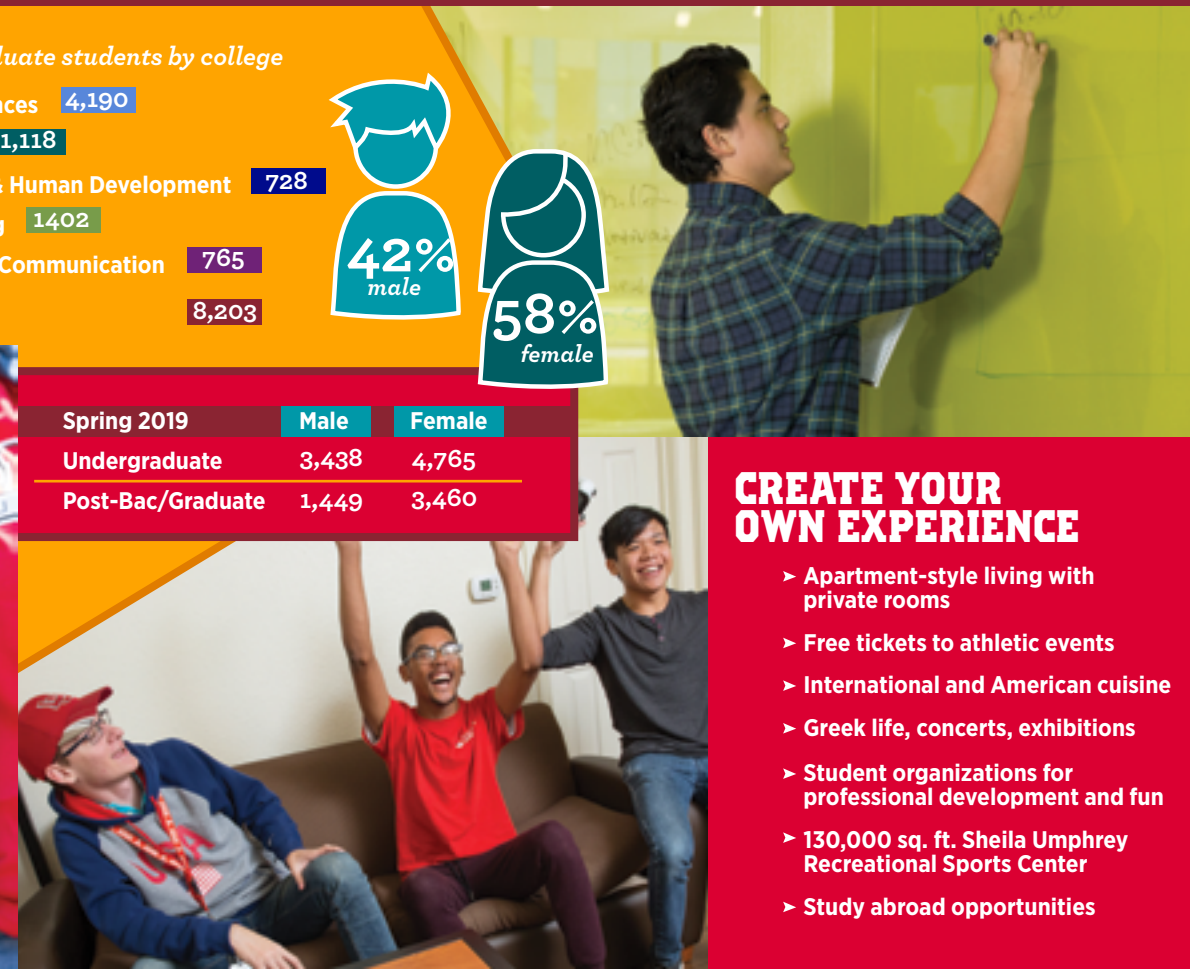


58%
female

Spring 2019	Male	Female
Undergraduate	3,438	4,765
Post-Bac/Graduate	1,449	3,460

CREATE YOUR OWN EXPERIENCE

- Apartment-style living with private rooms
- Free tickets to athletic events
- International and American cuisine
- Greek life, concerts, exhibitions
- Student organizations for professional development and fun
- 130,000 sq. ft. Sheila Umphrey Recreational Sports Center
- Study abroad opportunities





PAYING FOR COLLEGE

SCHOLARSHIPS & FINANCIAL AID

Lamar University offers quality and affordability. With low tuition and many financial aid and scholarship opportunities, LU can help make YOUR college education possible.

SCHOLARSHIPS

After you receive your acceptance to Lamar University, you may access your **personalized LU scholarship portal at lamar.edu/myscholarships**.

Through the scholarship portal, complete the LU scholarship application to be eligible for more than \$10 million in scholarships awarded annually, and also apply directly to our scholars programs shown here.

FINANCIAL AID

Starting Oct. 1, submit the Free Application for Federal Student Aid (FAFSA) by applying online at fafsa.ed.gov.

LU offers State and Federal aid programs which include grants, loans and work-study awards. Use the Lamar University Code 003581 on your FAFSA.

Students that are classified as a Texas resident who cannot apply for federal financial aid using the FAFSA are encouraged to complete the Texas Application for State Financial Aid (TASFA) at collegeforalltexas.com.



Scholarships
(409) 880-1714
scholarships@lamar.edu
➤➤ lamar.edu/scholarships

Financial Aid
(409) 880-8450
financialaid@lamar.edu
➤➤ lamar.edu/financialaid

Reaud Honors College
(409) 880-2294
➤➤ lamar.edu/honors

Top Scholars Program	\$80,000 FOUR-YEAR TOTAL	MIRABEAU SCHOLARSHIP & SOUTHEAST TEXAS LEGENDS SCHOLARSHIP	SAT 1330-1600 OR ACT 29-36	AND	HOLISTIC REVIEW OF ACADEMIC PERFORMANCE
	\$74,000 FOUR-YEAR TOTAL	SMITH-HUTSON SCHOLARSHIP	BASED ON ACADEMIC ACHIEVEMENT & NEED		
	\$40,000 FOUR-YEAR TOTAL	CARDINAL ELITE SCHOLARSHIP	SAT 1330-1600 OR ACT 29-36	AND	CLASS RANK Top 25%
	\$32,000 FOUR-YEAR TOTAL	ACADEMIC EXCELLENCE SCHOLARSHIP	SAT 1200-1320 OR ACT 25-28	AND	CLASS RANK Top 25%
	\$20,000 FOUR-YEAR TOTAL	DISTINGUISHED SCHOLARS	SAT 1080-1190 OR ACT 21-24	AND	CLASS RANK Top 25%
	\$4,000 FOUR-YEAR TOTAL	UNIVERSITY SCHOLARS	SAT 1010-1070 OR ACT 19-21	AND	CLASS RANK Top 25%
YOU MAY BE ELIGIBLE FOR OTHER SCHOLARSHIPS. MORE THAN 600 UNIQUE SCHOLARSHIP OPPORTUNITIES ARE AVAILABLE.		LU AWARDS MORE THAN \$20 MILLION IN SCHOLARSHIPS EACH YEAR. COMPLETE YOUR FAFSA AND TASFA AND USE CODE 003581 TO BE ELIGIBLE FOR ADDITIONAL FINANCIAL AID.			



➤➤ RAISE.ME/JOIN/LAMAR

Students planning to attend Lamar University can earn up to \$8,000 in microscholarships while still in high school. Good grades, a high GPA and community involvement are just a few of the many ways to earn money.

Sign up as early as July 1 your freshman year of high school

REAUD HONORS COLLEGE

By becoming a leader in the Lamar University community through the Reaud Honors College, you have an opportunity for leadership and camaraderie with other intellectually talented students. Get paired with a Reaud Honors College peer mentor and learn more about the boundless opportunities at LU.

BENEFIT FROM...

- Smaller classes taught by top-notch professors
- Upper-level interdisciplinary classes and seminars
- Enhanced classes in core curriculum and many majors
- Opportunity for independent study
- Honors contracts and thesis

STAND OUT IN THE CROWD!

Honors achievement is noted on your diploma and transcript. Become more marketable in your employment search and graduate/professional school applications.



APPLICATION REQUIREMENTS

- One of the following three is required:
 1. SAT of 1260
 2. ACT of 27
 3. Class rank of top 10%
- Additionally, minimum test requirements are:
SAT 1100 or ACT 22

REAUD HONORS COLLEGE REQUIREMENTS

- 26 hours of honors credits OR 23 hours of honors credits with an honors thesis
Honors curriculum offers exciting courses such as machine intelligence, social media and popular music.
- Maintain a 3.4 GPA
- Take part in one of the following high-impact educational practices: undergraduate research, creative activity, study abroad, internships, co-ops or service learning
- Active involvement in the LU community

Apply for the Reaud Honors College at LAMAR.EDU/HONORS

All qualified applicants, who apply before Feb. 1, will be considered for Reaud Honors College scholarships.

STUDY ABROAD

LU has quadrupled the number of students
STUDYING ABROAD
in the last 3 years

At Lamar University, students have the opportunity to pursue educational experiences overseas, living and studying in a different culture while earning course credits.

LU offers many faculty-led and semester exchange programs around the world to students of diverse academic background. Many scholarships are available for study abroad.

BENEFITS

- ▶ Increased self-confidence and personal growth
- ▶ A new understanding of the world and other cultures
- ▶ Better understanding of your own culture and values
- ▶ Improved communication and language skills
- ▶ Improved qualification in job market



STUDENTS TRAVEL TO

- Belize
- Brazil
- Canada
- China
- Costa Rica
- Dominican Republic

- England
- France
- Germany
- Greece
- Iceland
- Ireland

- Italy
- Japan
- Mexico
- Panama
- Russia
- South Africa

- South Korea
- Spain
- Taiwan



ROBERT SALAZAR

JUNIOR
Business Management &
Management Information Systems
Copperas Cove, TX

I will never forget how beautiful the experience in Spain was. From traditional architectural beauty and breathtaking views to unforgettable moments with brilliant students. I am thankful to Lamar University for giving me the opportunity to expand my learning to another level.”

LU Green Squad, Association of
Information Systems, Education
Initiative Association, Study Abroad

NEW SPACES ON CAMPUS





1,562
students participate in
intramural or club sports

VISIT US ON CAMPUS

*ranked as one of the
MOST ETHNICALLY &
ECONOMICALLY DIVERSE
universities in the country*
—U.S. News & World Report



CARDINAL VIEW

Students and their families learn about academic majors, student life on campus, a host of student-driven organizations, financial aid opportunities and scholarship potential. It is the time to get that all-important head start.

To register, visit
lamar.edu/cardinalview.

DATES

- Nov. 9, 2019
- Feb. 29, 2020

CAN'T MAKE IT TO CAMPUS?

Check out our virtual tour! This tour will give you a sneak peak of the campus as well as panoramic views inside classrooms and other specialty areas such as the recital hall, nursing simulation lab and engineering labs.

➤➤ LAMAR.EDU/VISIT

SCHEDULE A VISIT

Monday-Friday

Guided, 90-minute walking tours of campus depart from the Admissions Visitors Center in the John Gray Center, Herman Iles Building, 855 Jim Gilligan Way, Beaumont, TX 77705.

Groups should request a tour at lamar.edu/visit.

CARDINAL SATURDAYS

For future Cardinals who cannot visit on weekdays, Saturday tours are available on select dates by appointment at 10 a.m.

- Sept. 14, 2019
- Oct. 26, 2019
- April 4, 2020
- June 13, 2020
- July 25, 2020



IMPORTANT DATES

SEPTEMBER

14 Cardinal Saturday Tour

OCTOBER

1 FAFSA available

26 Cardinal Saturday Tour

NOVEMBER

9 Cardinal View

JANUARY

1 Deadline to apply for Mirabeau Scholars Program and Southeast Texas Legends Scholars Program

3 Application due for spring semester

FEBRUARY

1 Financial Aid Priority Deadline
Deadline to apply for Reaud Honors College and Smith-Hutson Scholarship

29 Cardinal View

APRIL

4 Cardinal Saturday Tour

JUNE

13 Cardinal Saturday Tour

JULY

1 Application opens for following fall semester

25 Cardinal Saturday Tour

AUGUST

5 Application due for fall semester

12 Document deadline for fall semester

2019

2020

FIELDS OF STUDY

UNDERGRADUATE

COLLEGE OF ARTS & SCIENCES

- ★ Applied Arts and Sciences
- Biochemistry
- Biology •
- Chemistry •
- Computer and Information Sciences
- Computer Game Development
- Computer Information Systems
- ★ Computer Science •
- ★ Criminal Justice
- Cybersecurity
- Earth Science •
- English •
- Environmental Science
- Management
- Forensic Chemistry
- General Studies
- Geology
- History •
- Mathematics •
- Modern Language •
 - French
 - Spanish
- Nursing
- Physics
- Political Science •
- Pre-Chiropractic
- Pre-Dental
- Pre-Law
- Pre-Med
- Pre-Occupational Therapy
- Pre-Optometry
- Pre-Pharmacy
- Pre-Physical Therapy
- Pre-Physician's Assistant
- Pre-Podiatry
- Pre-Veterinary Medicine
- Psychology
- Social Work
- ★ Sociology

COLLEGE OF BUSINESS

- Accounting
- Construction Management
- Economics
- Finance
- ★ General Business
 - Advertising
 - Business Education •
- ★ Entrepreneurship
- Industrial Engineering
- Retail Merchandising
- Human Resource Management
- ★ Management
- Management Information Systems
- Marketing

COLLEGE OF EDUCATION & HUMAN DEVELOPMENT

- Dietetics, Nutrition and Hospitality
- Exercise Science and Fitness Management
- Family Studies
- Fashion Retailing/ Merchandising
- Health •
- Interdisciplinary Studies •
- Kinesiology •

- Teaching Certification Available
- ★ Offered as online or on-campus degree program
- ★ Online only
- Check lamar.edu for latest listings.

COLLEGE OF ENGINEERING

- Chemical Engineering
- Civil Engineering
- Electrical Engineering
- ★ Industrial Engineering
- ★ Industrial Technology
- Mechanical Engineering

COLLEGE OF FINE ARTS & COMMUNICATION

- American Sign Language
 - Education •
 - Interpreting
 - Advocacy
- Art
 - Art Education •
 - Graphic Design
 - Studio Art •
 - Painting and Drawing
 - Photography
 - Printmaking
 - Sculpture and Ceramics
- ★ Communication
 - Advertising
 - Broadcasting
 - Corporate Communication
 - Film Studies
 - Film and Theatre Studies
 - Journalism
 - Journalism Education •
 - Speech Education •
- Music
 - Composition
 - Music Education •
 - Performance
 - Voice or Instrument
- Speech and Hearing Sciences
- Theater and Dance

GRADUATE

- PhD in Chemical Engineering
- Doctor of Audiology
- Doctor of Education in
 - Deaf Studies/Deaf Education
- ★ Educational Leadership
- Doctor of Engineering
- ★ Master of Arts in
 - Teaching Spanish
- Master of Arts in English
- Master of Arts in History
- ★ Master of Business Administration
- Master of Education in
 - Clinical Mental Health Counseling
- ★ Counseling & Development
- ★ Digital Learning & Leading
- ★ Educational Administration
- ★ Educational Technology Leadership
- ★ Special Education
- ★ Teacher Education
- Master of Engineering
- ★ Master of Engineering Management
- Master of Engineering Science
- Master of Environmental Engineering
- Master of Music
- ★ Master of Public Administration
- ★ Master of Public Health
- Master of Science
 - Accounting
 - Applied Psychology
 - Biology
 - Chemistry
 - Computer Science

- ★ Criminal Justice
- Deaf Studies/Deaf Education
- Environmental Engineering
- Environmental Studies
- Kinesiology
- Management Information Systems
- Mathematics
- ★ Nursing
- Nutrition
- Port & Terminal Management
- Speech Language Pathology

CERTIFICATIONS

- Construction Project Management Certificate
- ★ Counseling Certification
- Cybersecurity Certificate
- Educational Diagnostician Certificate
- ★ Enterprise Resource Planning Certification
- Leadership Certificate
- Power Energy Engineering Certificate
- ★ Principal Certification
- Professional Accounting Certificate
- Professional Certificate in Port Management
- ★ Superintendent Certification
- ★ Vocology Certificate

1 of 16

universities nationwide
to RECEIVE AN "A"
for quality core curriculum

COSTS

A typical budget for one semester for a student living on campus includes costs for tuition and fees, room and board, books and supplies.

Tuition/Fees	\$4,850*
Room	\$2,626
Board	\$1,309**
Books/Supplies	\$500
Total	\$9,285

Tuition costs are lower for Texas residents. Residents of states bordering Texas (Arkansas, Louisiana, New Mexico and Oklahoma) pay in-state tuition rates plus \$30 per credit hour. Residents of other U.S. states and other countries pay out-of-state tuition.

* Tuition is subject to change. Figure based on approximate costs for Texas resident taking 12 credit hours.
**Typical meal plan cost

In 2018-2019, LU awarded
MORE THAN

**\$142
million**

in financial assistance to
eligible students.



71%
ENROLLMENT
INCREASE
during the past
10 years

OBINNEH EMEH

SENIOR
Chemical Engineer
Dallas, TX

Coming to Lamar University has helped me develop my interpersonal and leadership skills. The friends I've made here and the relationships I've built with the staff and faculty have made me a successful student and leader on campus. The College of Engineering here has exposed me to experimental learning that prepares me for the chemical industry. The professors are always available to help students succeed along with resources on campus to ensure students succeed."

National Society of Black Engineers, American Institute of Chemical Engineers, Society of Hispanic Professional Engineers, Society of Asian Scientists and Engineers, LU Ambassador, Co-Op

HOW TO APPLY

REQUIRED DOCUMENTS

1. Complete the admission application at applytexas.org.

FRESHMAN

—first-time college student

2. Submit official high school transcripts and any dual-credit transcripts. Send transcripts to the Admissions Office, P.O. Box 10009, Beaumont TX 77710
3. Submit official SAT scores, from collegeboard.org, or ACT scores, from actstudent.org. Use SAT code 6360 or ACT code 4114. Beginning July 1, 2019, for fall 2020 and beyond, we will no longer require SAT/ACT scores during the admissions process. We will accept self-reported scores from the student. **Official scores must be submitted to be enrolled.** To self-report your scores, please visit lamar.edu/selfreport. Students may do this before or after applying to LU.

RETURNING STUDENTS

2. Submit official college transcripts of all college work completed after last attending Lamar University

NON-HIGH SCHOOL GRADUATES (GED)

2. Submit GED scores.
3. Submit official SAT scores, from collegeboard.org or ACT scores, from actstudent.org.
4. Submit official partial high school transcript.



ADMISSIONS REQUIREMENTS*

We're here to make each step toward becoming a Cardinal a smooth experience. Visit lamar.edu/admissions for admission requirements and follow the steps below.

High School Class Rank	SAT	ACT
Top 25%	No minimum required	No minimum required
2nd quartile, Unranked/ Home School	1040	20
3rd and 4th quartile	1080	21

* Admission requirements are subject to change. First-time applicants who do not meet admission requirements will be considered on an Individual Approval basis.



TRANSFER STUDENTS



1,786
degrees conferred to
May 2019 grads

HOW TO APPLY

REQUIRED DOCUMENTS

1. Complete the admission application at applytexas.org.

TRANSFER STUDENTS —with fewer than 18 hours of college credit

2. Submit an official high school transcript, verifying graduation.
3. Submit official college transcripts from ALL colleges attended.
4. Submit official SAT scores, from collegeboard.org or ACT scores, from actstudent.org.
Use SAT code 6360 or ACT code 4114.

TRANSFER STUDENTS —with 18 or more hours of college credit

2. Submit official college transcripts from ALL colleges attended.

TRANSFER SCHOLARSHIPS

AMOUNT/YEAR	TRANSFERABLE GPA	RENEWABLE?
TRANSFER ACADEMIC EXCELLENCE SCHOLARSHIP		
\$2,000	3.5-4.0	YES
PHI THETA KAPPA (PTK) SCHOLARSHIP		
\$1,500	3.0-3.49	YES
\$1,000	3.0-3.49	YES

TO APPLY FOR SCHOLARSHIPS

- Complete your admissions application.
- Go to lamar.edu/myscholarships for more information and to apply.

PRIORITY DEADLINES

Fall—July 1
Spring—Dec. 1

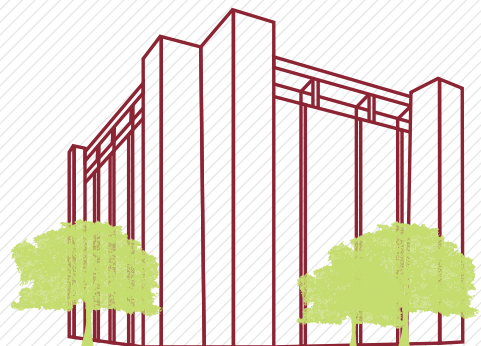


MEGAN FISHER

JUNIOR
Nursing
League City, TX

Lamar University has not only provided me with the academic tools I need to succeed, but it also has allowed me to gain a network of friends and faculty that care about my success. The people I have met at LU have made this school a place I enjoy being at and can't wait to return to after each break. I have experienced growth here that I did not expect and doubt I would have experienced at a large and impersonal university. I am proud to be an LU Cardinal!

Signing Cardinals, GAME,
Honor's Student Association,
Sojourn College Ministry



290
acre campus

8,878

undergraduate students

more than

100
programs of study



BEAUMONT
is 90 miles from Houston



19:1

student-to-faculty
ratio
10:1 student-to-staff ratio

870 students work on campus

students from **61**
COUNTRIES



81%
of resident undergrads
receive financial assistance



FOUNDED IN
1923

more than
150 STUDENT
clubs &
organizations



**TEXAS GULF
COAST BEACHES**
one hour away

19 fraternities
& sororities





LAMAR UNIVERSITY

MEMBER THE TEXAS STATE UNIVERSITY SYSTEM™

YOUR
Moment
IS HERE

**GO AHEAD. TAKE FLIGHT.
ACCEPT THE CHALLENGE.**

you'll be ready
..... *to*

start your story

We take care of you so you can take care of your future.



lamar.edu/admissions

Lamar University is an equal opportunity/affirmative action educational institution.