

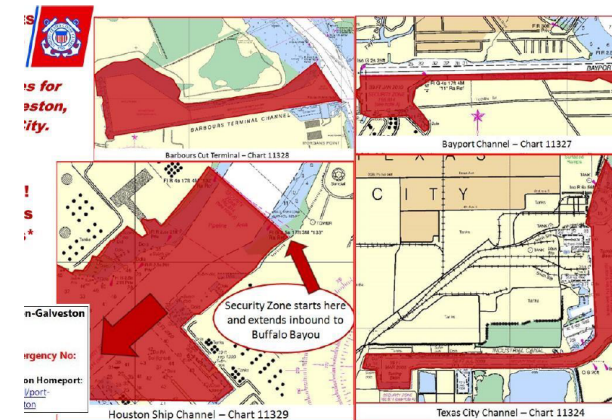
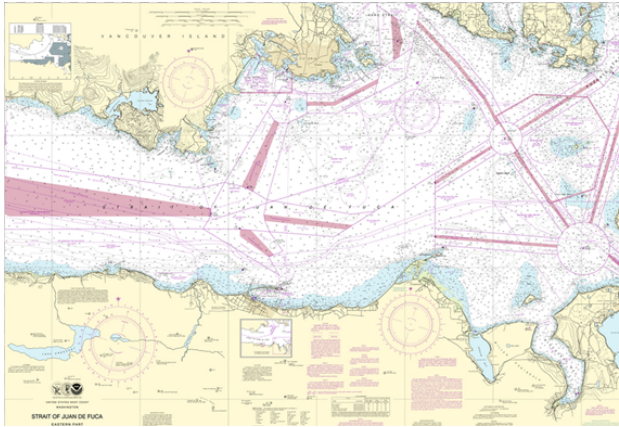
Management and Reconstitution of the Marine Transportation System



Coast Guard Perspective

Vessel Traffic Management

Passive Traffic Management



Vessel Traffic Service

What is a Vessel Traffic Service?

- Active Traffic Management
- VTS works to prevent groundings, rammings, and collisions, and the associated loss of life and damage to property and the environment by sharing information and implementing appropriate traffic management measures.

Vessel Traffic Service

What a VTS Does...

- **Enhance Maritime Security**
- **Facilitate Commerce**
- **Protect the Environment**
- **Enhance Maritime Security**



Disruptions to the MTS

- Fog
- Weather
- Planned Events
- Unplanned Events



Disruptions to the MTS

Minor Disruptions...

- VTS Advisories
- Recommendations
- Directions
- Safety Zones / Security Zones / COTP Orders
- Port Coordination Team (PCT)

Disruptions to the MTS

Major MTS Disruptions...

“Our operational capabilities also include developing a national capacity for Marine Transportation System recovery. The nation needs a coordinated, integrated approach to planning for and responding to major disruptions in our marine transportation system, the lifeblood of America’s economy.

Adm. Thad Allen
2007 State of the Coast Guard Address

Disruptions to the MTS

MANDATES

- MTSA 2002
- National Infrastructure Recovery Plan (MIRP)
- National Strategy for Maritime Security
- National Maritime Transportation Recovery Plan
- National Incident Management System
- Maritime Infrastructure Recovery Plan
- USCG Strategy for Maritime Safety, Security and Stewardship

Protecting America's Ports



*Maritime Transportation
Security Act of 2002*



The U.S. Coast Guard Strategy

*for
Maritime Safety, Security, and Stewardship*



NUMBER 100, D.C.



THE MARITIME INFRASTRUCTURE RECOVERY PLAN

**FOR
THE NATIONAL STRATEGY FOR MARITIME SECURITY**

APRIL 2004



Strategy to Enhance International Supply Chain Security

July 2017

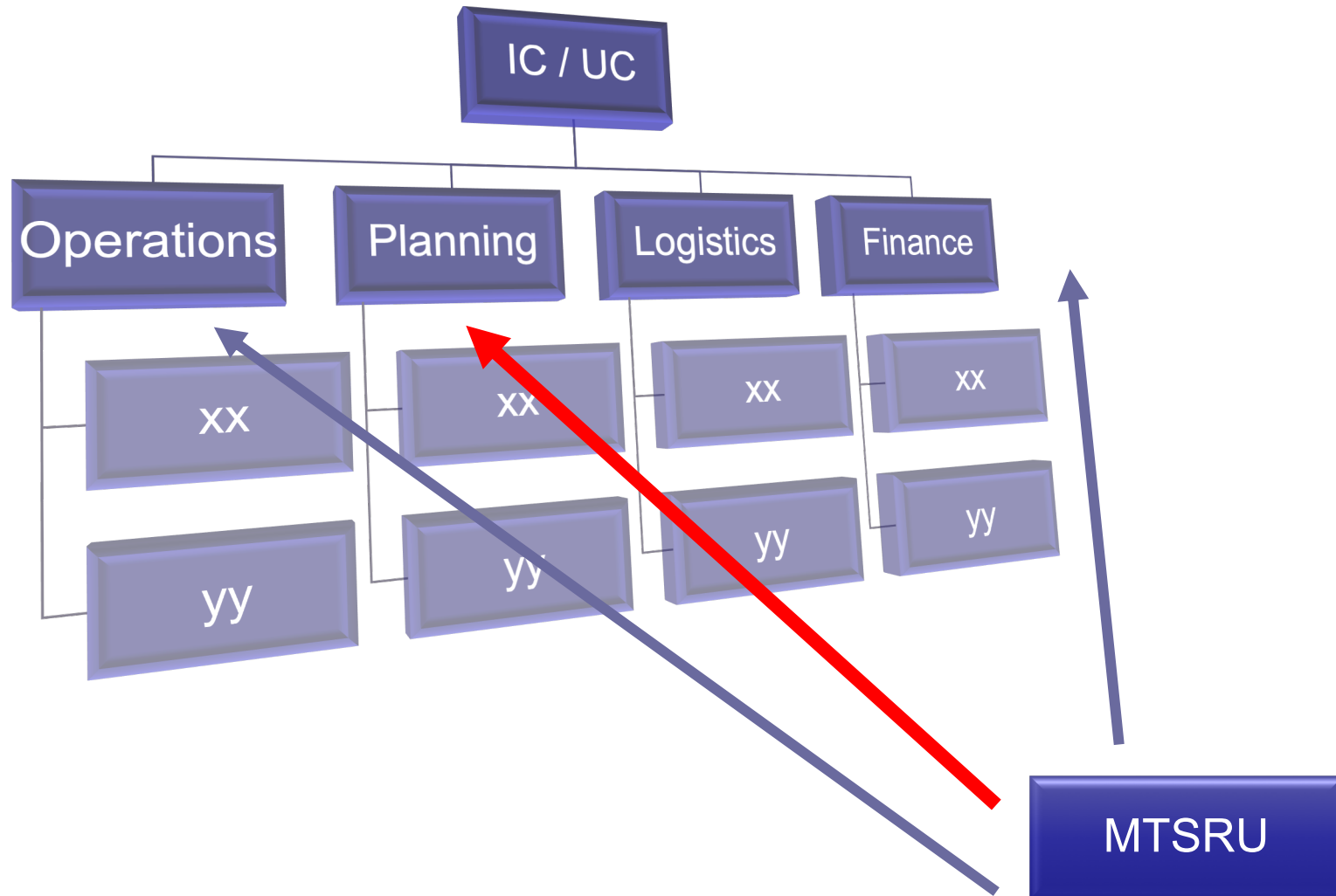
MTSRU

What is the MTSRU?

The MTS Recovery Unit is a part of the overall response and recovery effort following a significant port disruption.

While Federal, State, and local authorities are working on a wide range of emergency response activities, the MTSRU has the singular focus on re-opening the port for the resumption of commercial activity.

MTS Recovery Unit



U.S. DEPARTMENT OF
HOMELAND SECURITY

U.S. COAST GUARD



INCIDENT
MANAGEMENT
HANDBOOK

May 2014

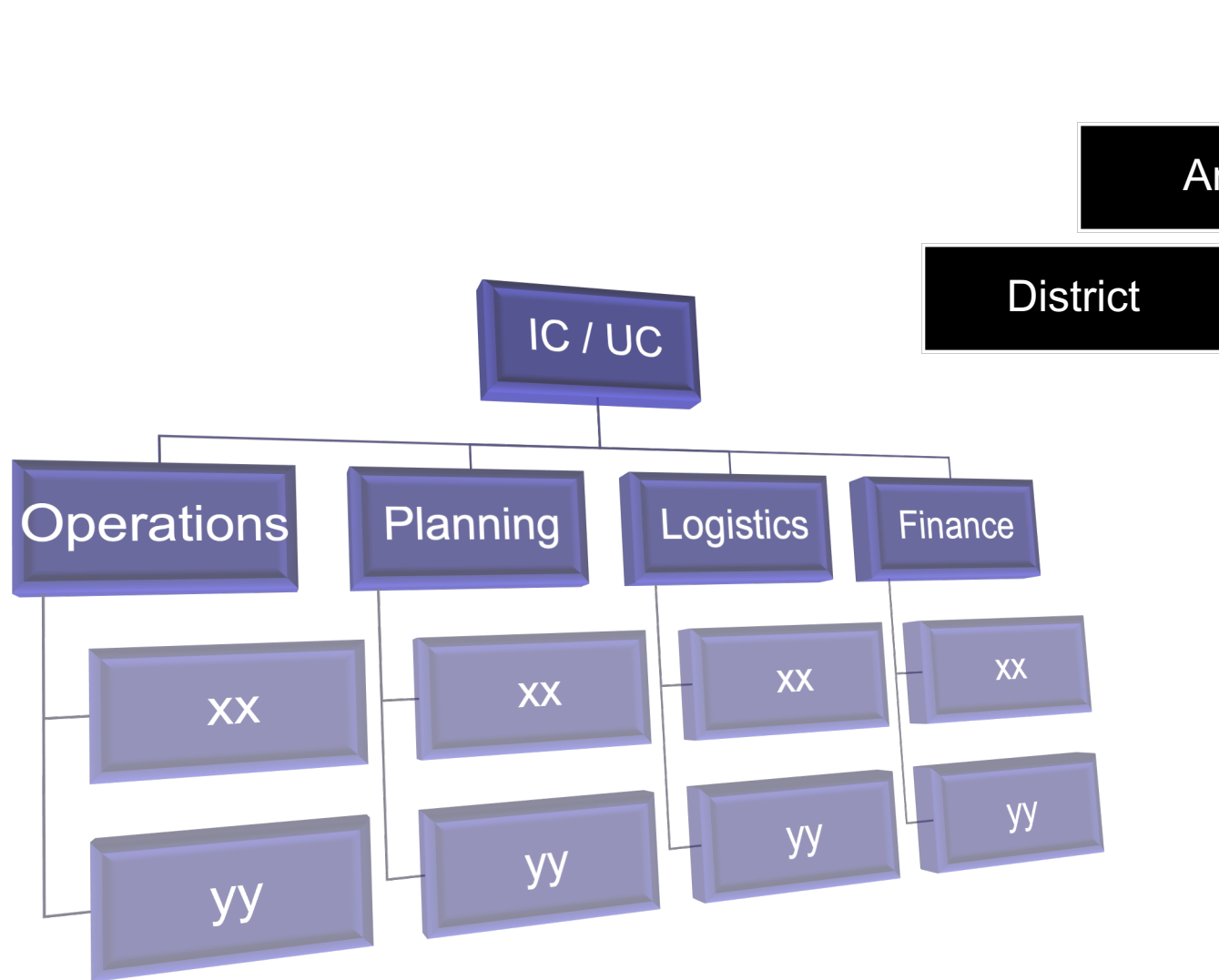
U.S. Coast Guard
COMDT PUB P3120.17B

MTSRU

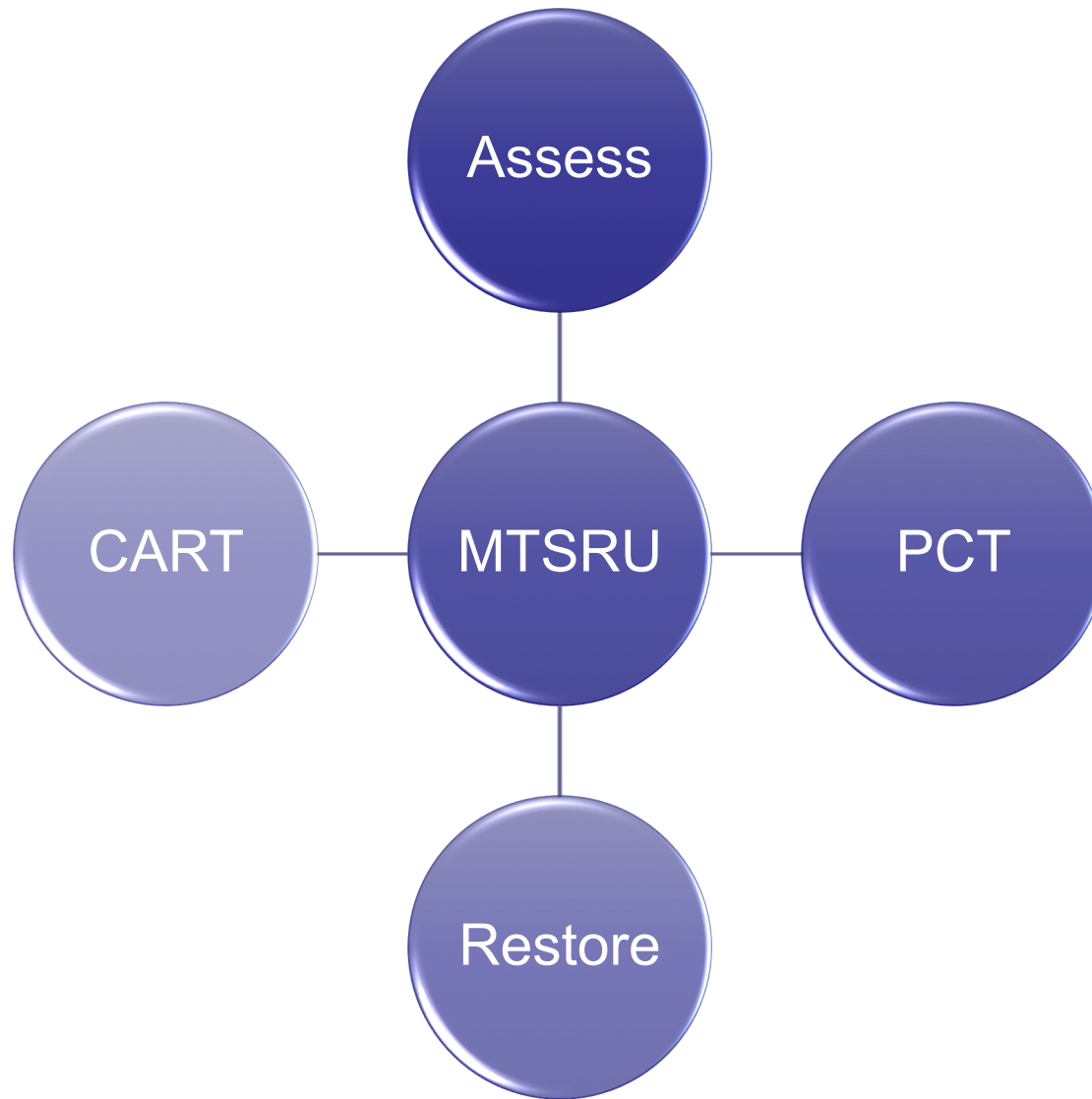
MTSRU Responsibilities:

- Track and report status of the MTS
- Understand critical commerce pathways
- Provide an avenue of input for stakeholders
- Determine and recommend courses of action
- Recommend priorities for MTS recovery operations
- Restore basic functionality of MTS infrastructure to facilitate the rapid resumption of commerce.

MTS Recovery Unit



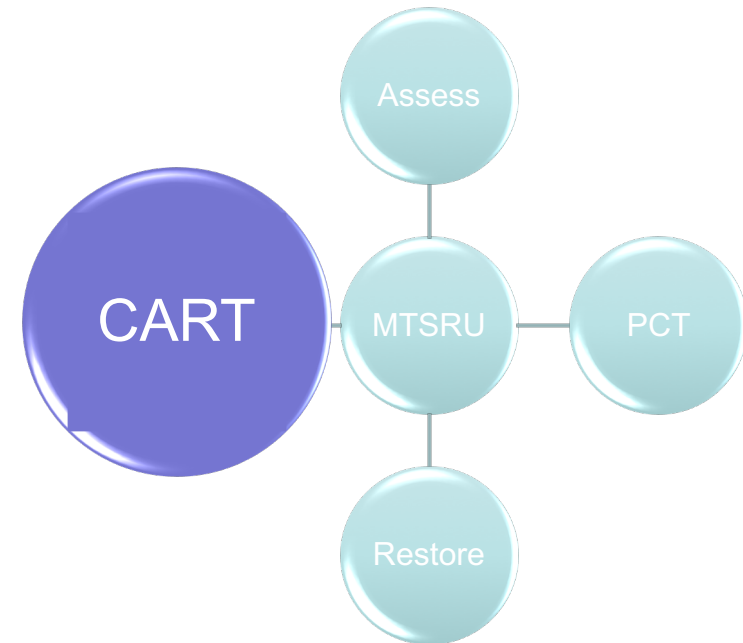
MTS Recovery Unit



MTS Recovery Unit

Essential Elements of Information

- Waterways & Navigation
- Port – Critical Infrastructure
- Port – Vessels
- Offshore Energy
- Monitoring Systems



EEI Type	Total Baseline		EEI Type	Total Baseline
Aids to Navigation	93		Locks	2
Anchorage	5		Monitoring Systems	1
Barge Fleeting Areas	5		Non-container Facilities	11
Barge Traffic	300		Non-Deep Draft Channel	4
Break-Bulk Facility	3		Offshore Platforms	2
Bridges	11		Oil Refinery	4
Bulk Liquid Facilities	25		Petroleum Facility	1
Chemical Facility	4		Ports	3
Commercial Fishing	30		Shipyards	11
Deep Draft Channel	6		USCG Unit	4
LNG/LPG Facility	3			

MTS Recovery Unit

DHS

USCG
CBP
ICE
TSA
FEMA

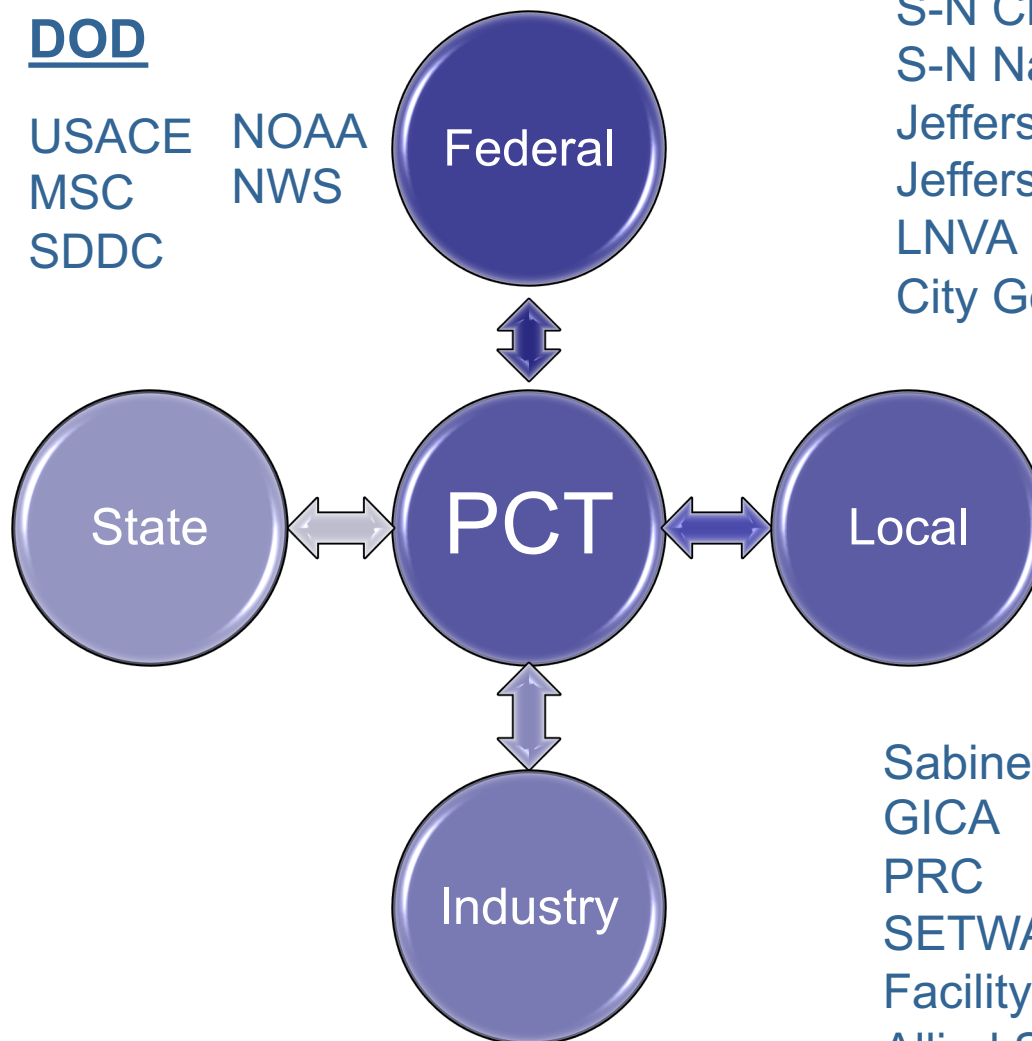
DOT

MARAD
FHA
FRA
PHMSA

DOD

USACE
MSC
SDDC

NOAA
NWS



S-N Chiefs Assoc.
S-N Nav District
Jefferson Cty Judge
Jefferson Cty Sheriff
LNVA
City Governments

TGLO
TXDOT
TX DPS
TCEQ
TRRC

Sabine Pilots
GICA
PRC
SETWAC
Facility Reps
Allied Services

MTS Recovery Unit



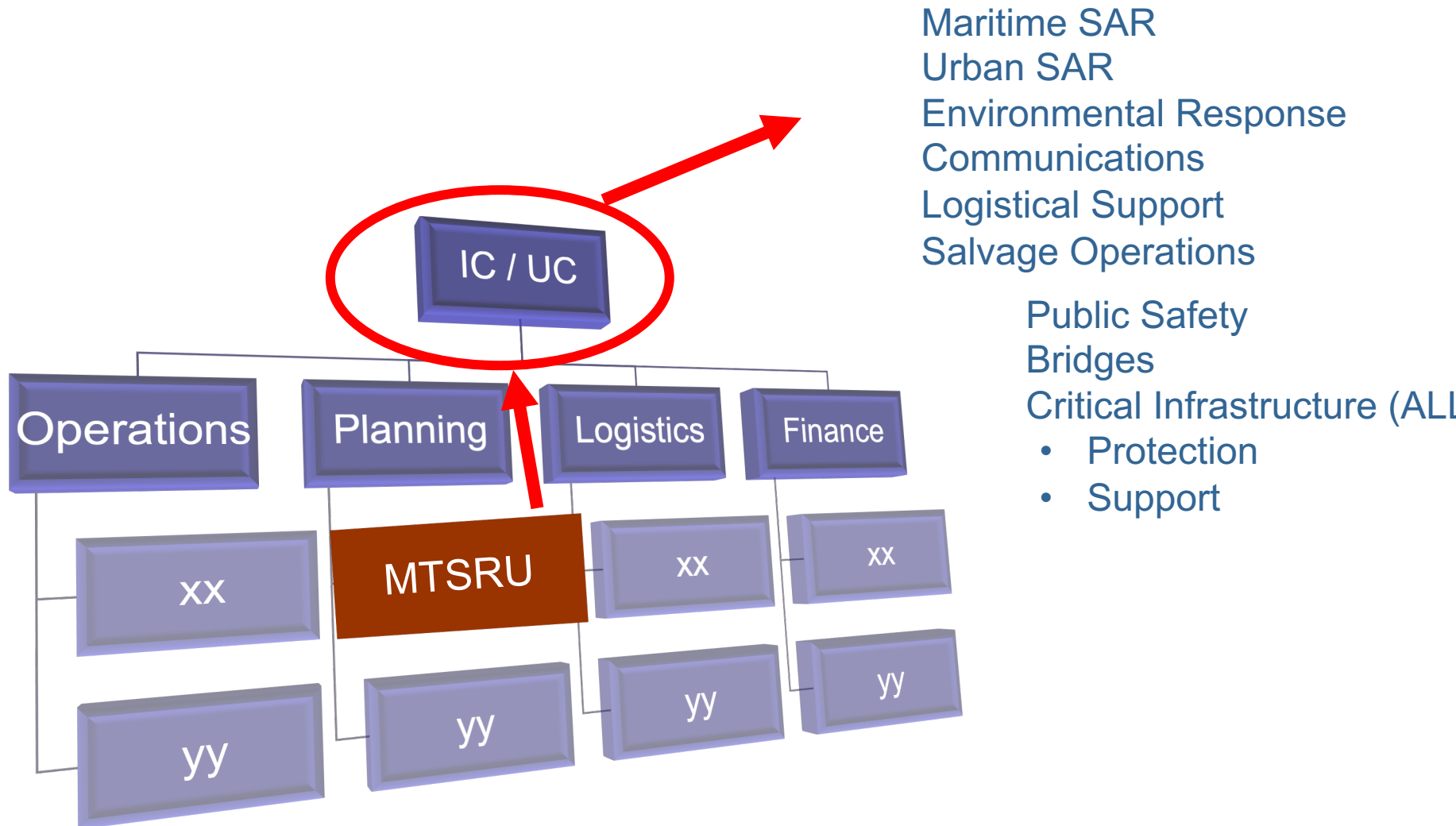
MTS Recovery Unit



MTS Recovery Unit



MTS Recovery Unit



MTS Recovery

