

Reconstitution

#The_Struggle_Is_Real

Briefing Presented by:

Timothy J. White, P.E., PMP

Resident Engineer

Galveston District

Port Arthur Resident Office



®

US Army Corps of Engineers
BUILDING STRONG®



Briefing Will Include

- Navigation Mission of the Corps
- Galveston District Navigation Statistics
- Who Is Involved?
- Harvey and Reconstitution
- What You Can Expect
- Port Arthur Resident Office Open House



NAVIGATION MISSION

Provide safe, reliable, efficient and environmentally sustainable waterborne transportation systems (channels, harbors, and waterways) for movement of commerce, national security needs, and recreation.



GALVESTON DISTRICT – NAVIGATION FACTS



- Monitor and maintain over 1,000 miles of navigation channels and waterways
- Dredge ~25 million cubic yards per year
- 10 Major Texas maritime Ports
- Gulf Intracoastal Waterway connects Ports
- Texas Ports and Waterways moved >600M tons of Commercial Cargo during 2015
- 21.8% of Nation's Tonnage through Texas Ports
- 25.4% of Nation's Imports through Texas Ports
- 9.5% of Nation's Tonnage through Port Houston



WHO IS INVOLVED???

GULF COAST JOINT HURRICANE RESPONSE PROTOCOL

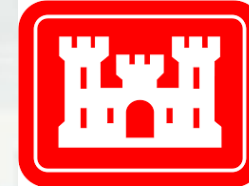
Port Coordination Teams (PCTs)

- Led by U.S. Coast Guard
 - USCG – Sector Corpus Christi
 - USCG – Sector Houston-Galveston
 - USCG – MSU Port Arthur
- Coordinates Vessel movements pre- and post-storm
- Sets Port Readiness Conditions; Whiskey, X-ray, Yankee, Zulu, Recovery



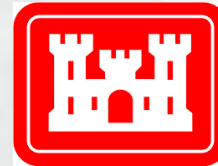
Navigation Restoration Team (NRT)

- Led by U.S. Army Corps of Engineers
 - USACE – Galveston District
 - USACE – New Orleans District
 - USACE – Mobile District
- Assesses and verifies Channel Conditions
- Reports Channel Conditions; *eHydro*
- Advises USCG on Channel Open, Close and/or Restrictions
- Issues Emergency Contracts for 'Dredging' & 'Obstruction Removal'



GULF COAST JOINT HURRICANE RESPONSE PROTOCOL

Port Coordination Team (PCT)



Facilities

Shippers



Ports

Pilots
Associations

Recreational
Boaters

Local Law
Enforcement





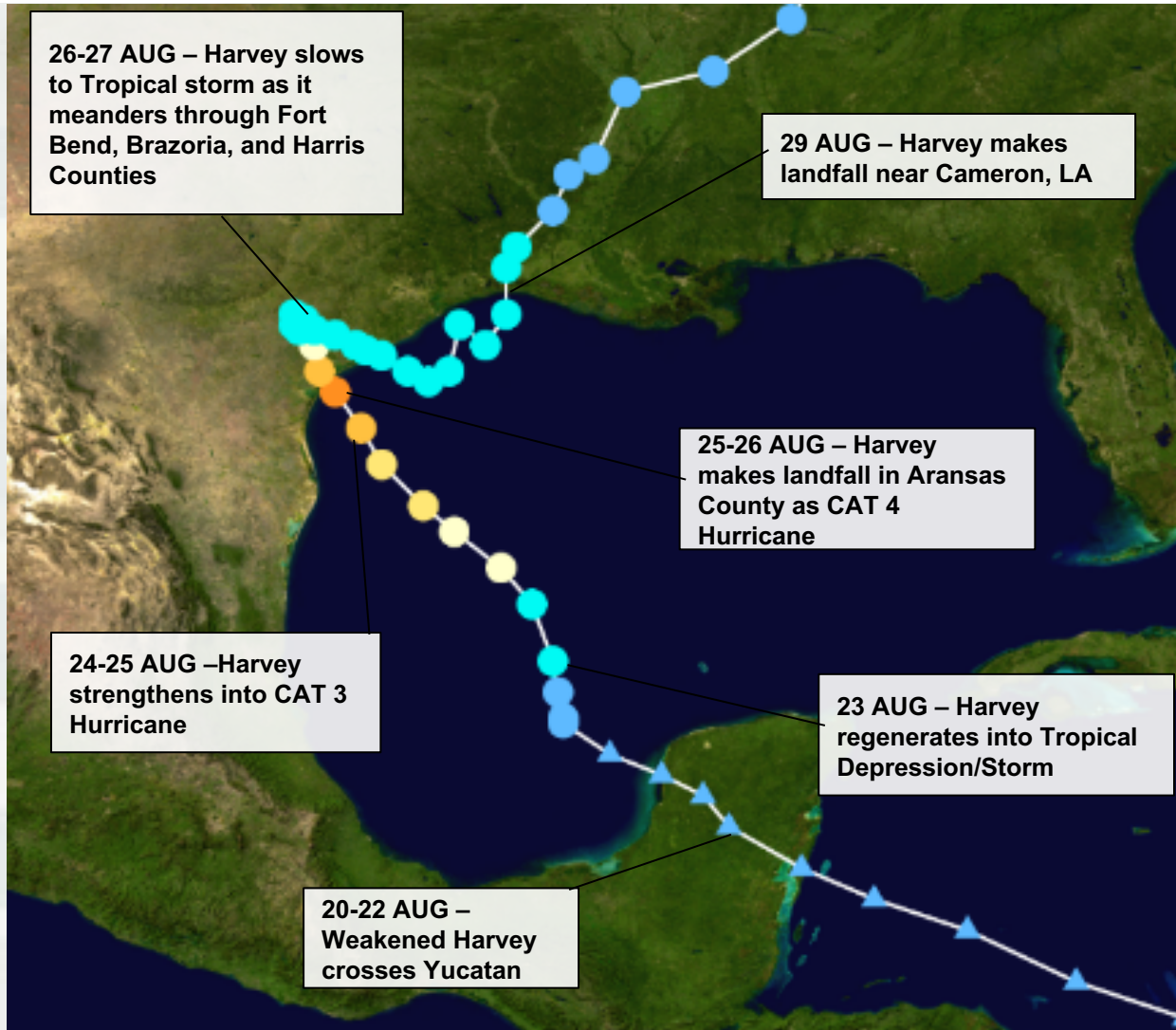
GULF COAST JOINT HURRICANE RESPONSE PROTOCOL

Navigation Restoration Team (NRT)





Hurricane Harvey and the Texas Coast



Flooding in Port Arthur, Jefferson County on 31 August

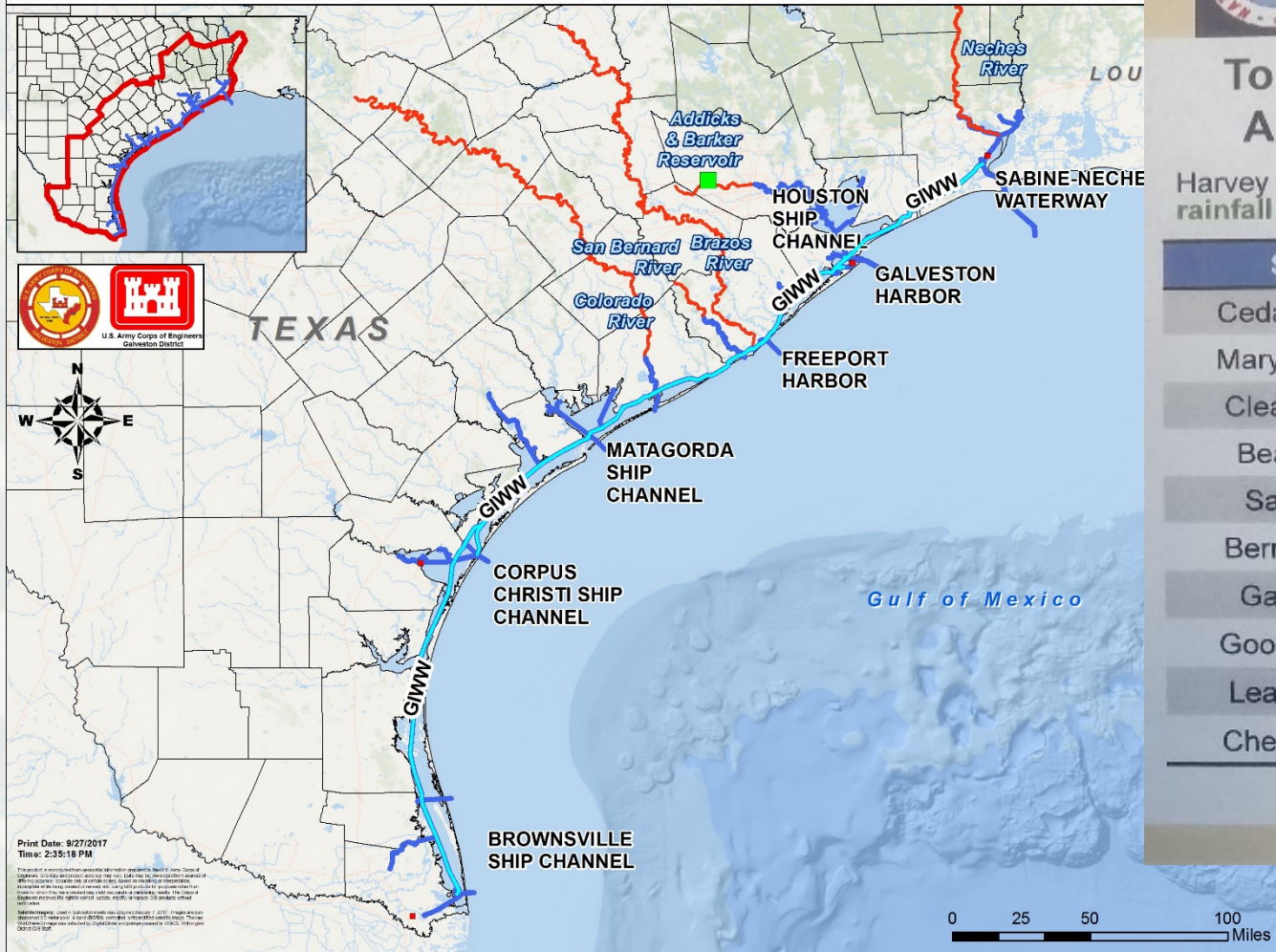
LEGEND

- Tropical Depression (≤ 38 mph)
- Tropical Storm (39 - 73 mph)
- Cat 1 Hurricane (74 - 95 mph)
- Cat 2 Hurricane (96 - 110 mph)
- Cat 3 Hurricane (111 - 129 mph)
- Cat 4 Hurricane (130 - 156 mph)
- Cat 3 Hurricane (≥ 157 mph)



HURRICANE HARVEY

GALVESTON DISTRICT - NAVIGATION CHANNELS



West Gulf
River Forecast Center

Top 10 Point Rainfall Amounts in Inches

Harvey produced record breaking
rainfall totals of **40 to over 50 inches**

SITE	RAINFALL
Cedar Bayou	51.88
Mary's Creek	50.04
Clear Creek	48.20
Beaumont	47.52
Santa Fe	46.70
Berry Bayou	44.88
Galveston	43.91
Goose Creek	43.87
League City	43.32
Cheek Canal	43.11

For current live maps of the
West Gulf River Forecast District

www.weather.gov



Sept 26, 2017

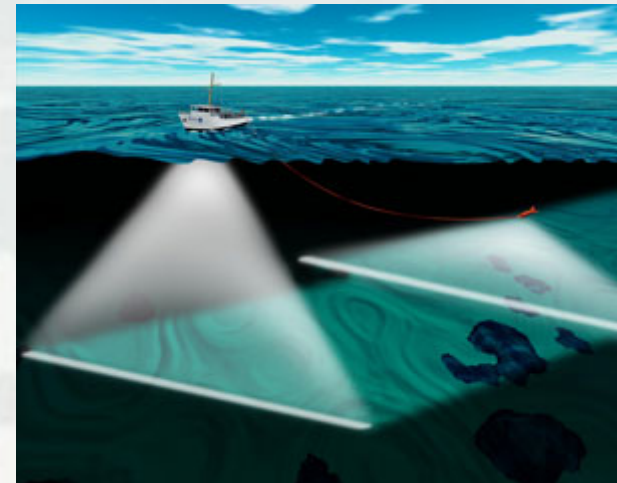
BUILDING STRONG®

Galveston Historic Rainfall – Sediment Load



BUILDING STRONG®

<http://www.swg.usace.army.mil/Missions/Navigation.aspx>

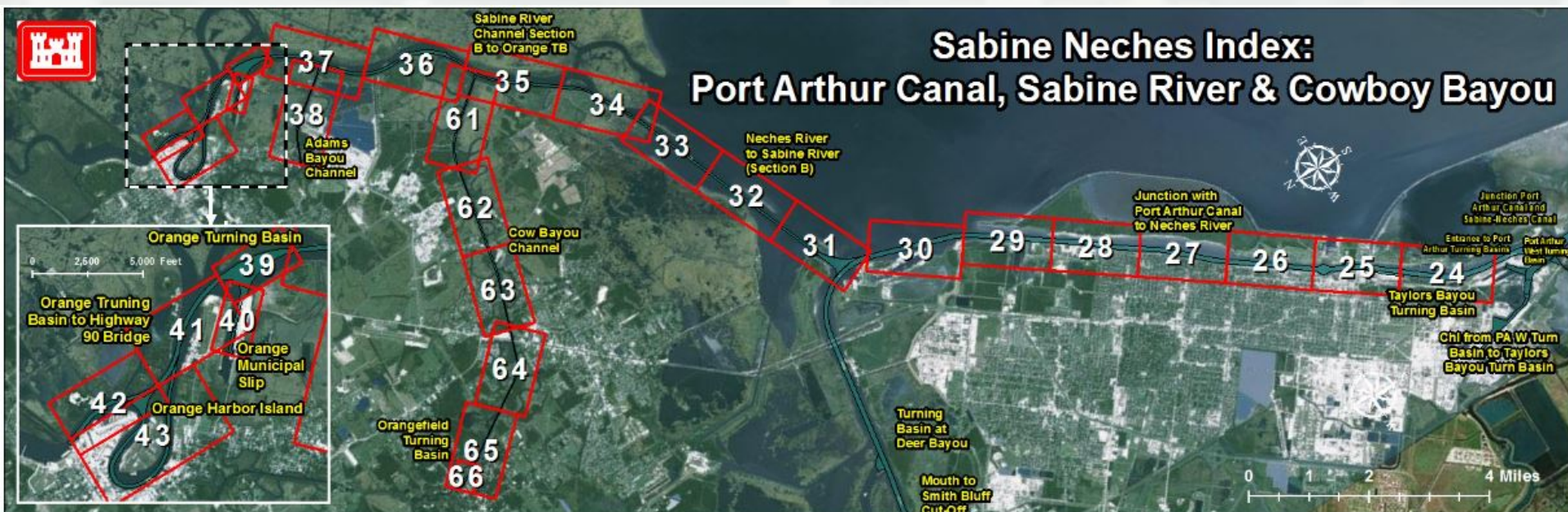


[illegible]

Cutter Head Dredge



Maps on the Corps SWG Website

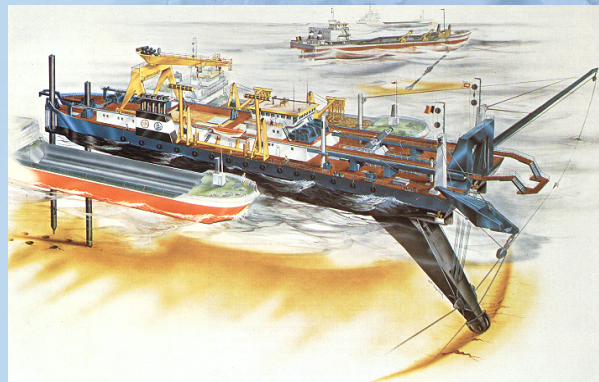
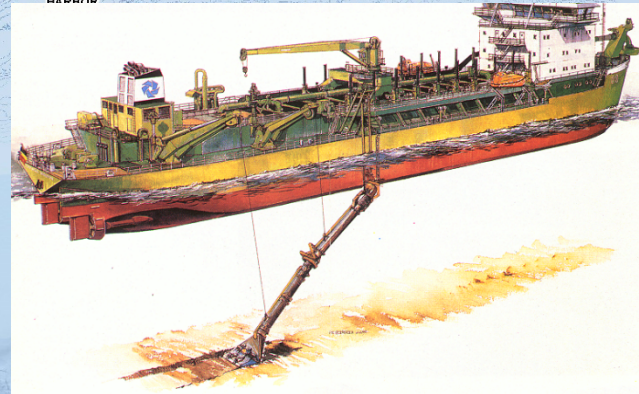
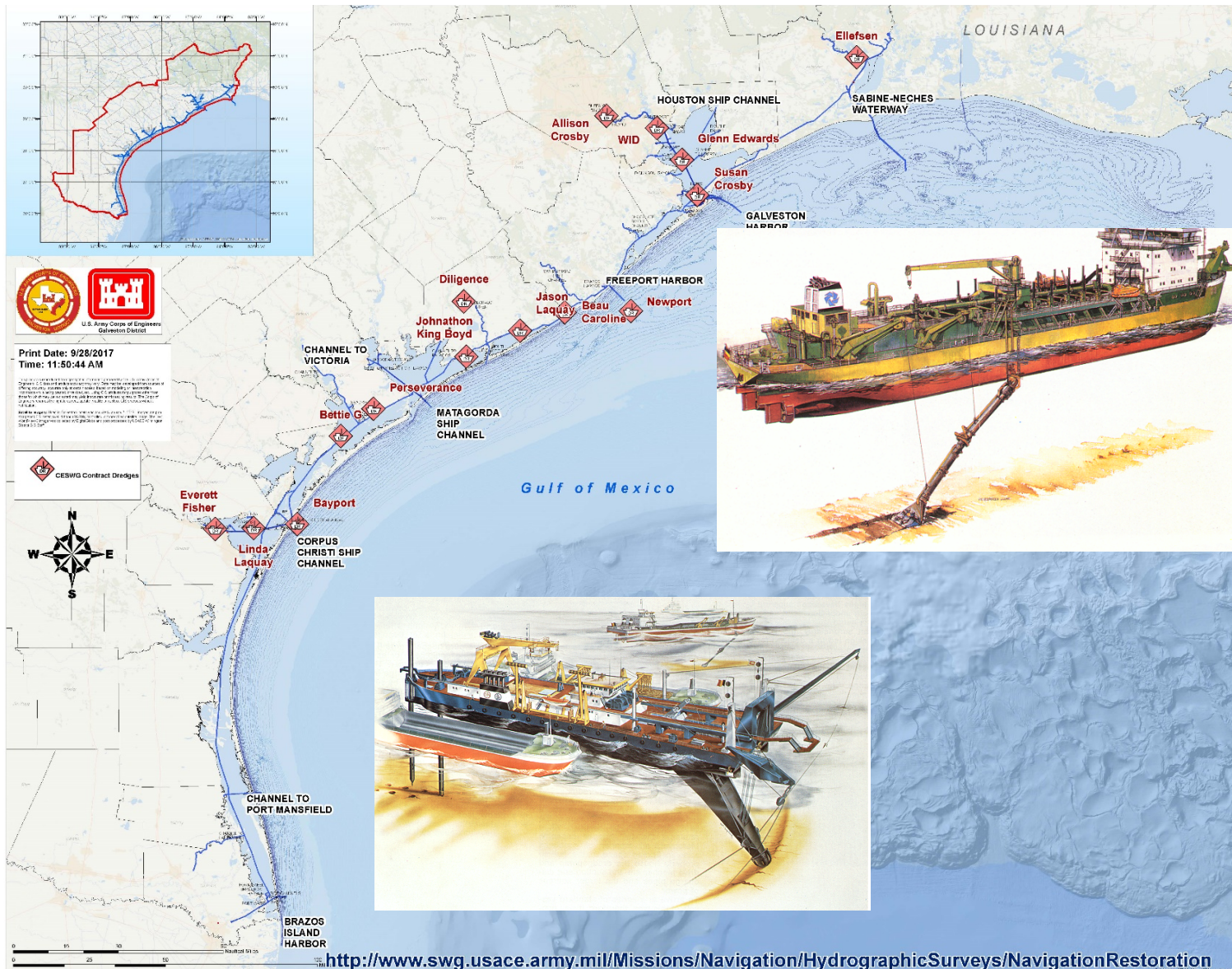


<https://www.swg.usace.army.mil/> Missions, Navigation, Sabine Neches Waterway



BUILDING STRONG®

CONTRACT DREDGES – U.S. ARMY CORPS OF ENGINEERS



DING STRONG®

<http://www.swg.usace.army.mil/Missions/Navigation/HydrographicSurveys/NavigationRestoration>

Open House at PARO

Friday, April 26, 2019

8:00 AM to 2:00 PM

201 Pleasure Pier Blvd,
Pleasure Island, Port Arthur, Texas

Please stop by and say hi to old friends and meet some newbies.



BUILDING STRONG®



ON FACEBOOK

www.facebook.com/GalvestonDistrict



ON TWITTER

www.twitter.com/USACEgalveston



ON YOUTUBE

www.YouTube.com/GalvestonDistrict



ON DVIDS

www.dvidshub.net/units/USACE-GD



ONLINE

www.swg.usace.army.mil

